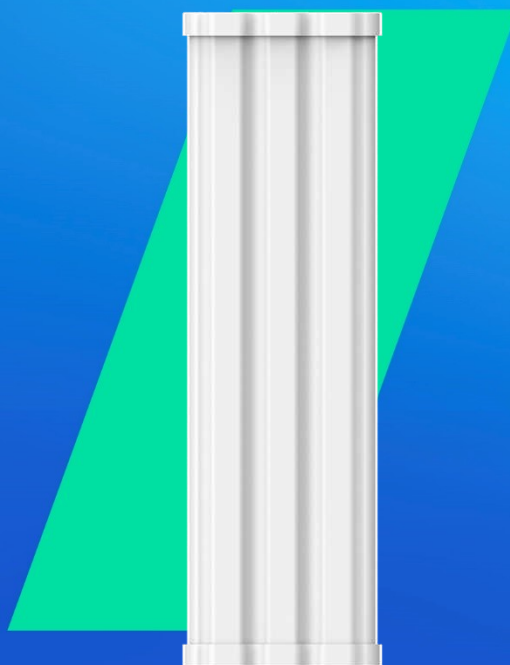


RG-ANT16S-120

120° Sector Antenna of RG-AirMetro Series Wireless Bridges



Highlights

- Choose from Three Antennas for Diverse Scenarios
- IP55 Rating against Harsh Environment
- All-in-one Cloud Management Simplifies the User Journey

Highlight Features



RG-AirMetro Series Wireless Bridges

After pairing, the bridges support:

10 km

Up to 10 km
Wireless Transmission

32 PTMP

Up to 32 PTMP
Links



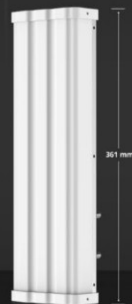
Easy Site Survey
Tool



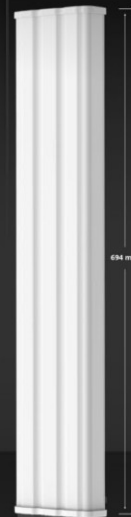
All-in-One Cloud
Management



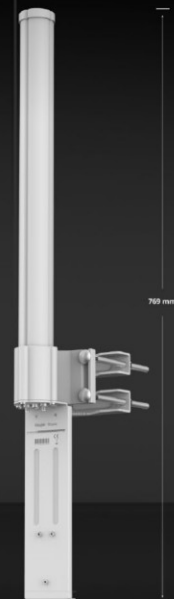
RG-AirMetro550G-B



RG-ANT16S-120



RG-ANT20S-90



RG-ANT13-360

/ Highlight Features

A **Perfect Match** for Different Devices and Scenarios



RP-SMA
Connectors

Fast Pairing

One-Touch Pairing All in 30 sec



Highlight Features

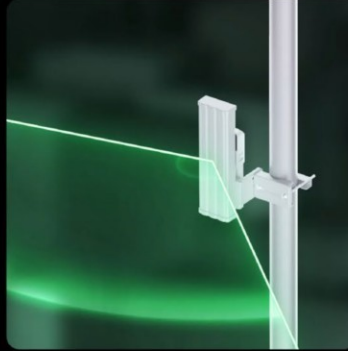
Antennas

Triple Devices, Beyond Triple Choices



RG-ANT20S-90

5 GHz, 20 dBi
H: 90°, V: 7°
10 km



RG-ANT16S-120

5 GHz, 16 dBi
H: 120°, V: 10°
5 km



RG-ANT13-360

5 GHz, 13 dBi
H: 360°, V: 7°
2 km

Still Stable

Fearless of Harsh Environment

IP55

IP55
Weatherproof



220.32 km/h
(137 mph)
Wind Survivability

6kV

6 kV
Surge Protection

24kV

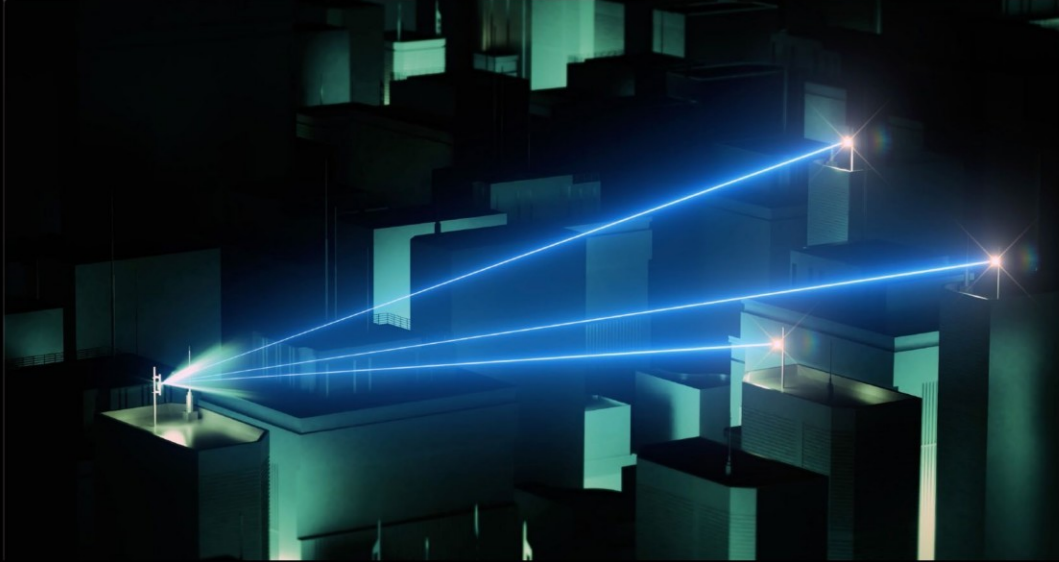
24 kV
Contact/ Air
ESD



Highlight Features

PTMP

Up to 32 PTMP Links



WISP

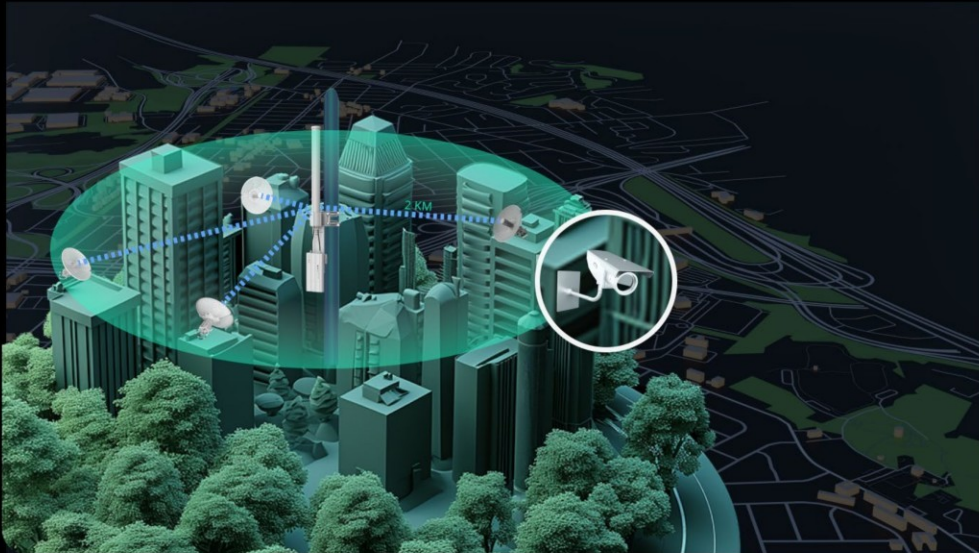
Extensive Transmission Without Fiber Connections



Highlight Features

CCTV

Affordable Excellence and Smooth Surveillance



AI Heatmap for Bridge

Your Real Outdoor Adventure Companion

The image displays the Ruijie Cloud management interface. On the left is a sidebar with navigation options: Home/Overview, Wireless Bridge Order, Product List, Topology, Placement Design, Placement Map, Heatmap (DCK), Device Installation, Highligts, and Company Info. The main area shows a 'Product List' table with columns for Brand, Product Type, Product Model, Product Photo, and Description. The table lists three Ruijie Bridge models: RS-ANT185-120, RS-Antenna-6000, and RS-Antenna-5000. A 'Topology' section is visible below the table. On the right, there is an 'Export' section with options for 'Export Format' (Excel, PDF, Image) and 'Export Including Cost' (On/Off). To the right of the interface is a smartphone displaying a heatmap application with a map and various data points.

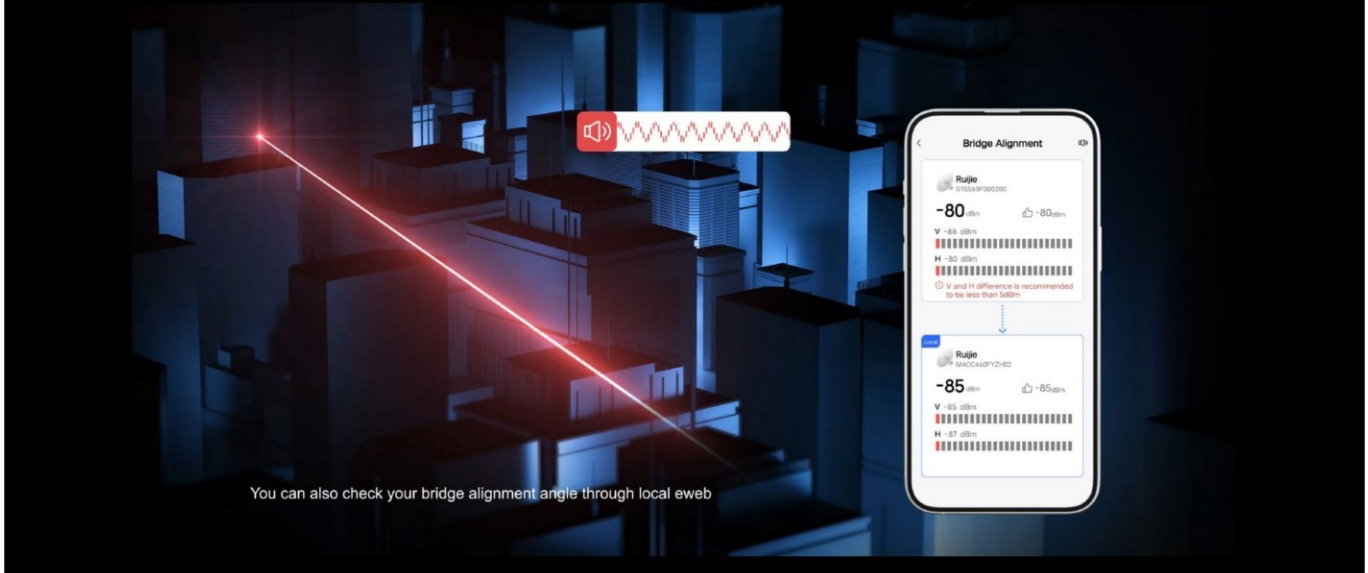
Brand	Product Type	Product Model	Product Photo	Description
Ruijie	Bridge	RS-ANT185-120		120° 80Hz dual-stream 2x2 lensless stream
Ruijie	Bridge	RS-Antenna-6000		Wireless bridge CPE, 802.11n MIMO, supports 11ac power & IPSEC, gain up to 23dB
Ruijie	Bridge	RS-Antenna-5000		Wireless bridge base station, 802.11n MIMO, IPSEC

Available on both Ruijie Cloud and Ruijie Reyee App

Highlight Features

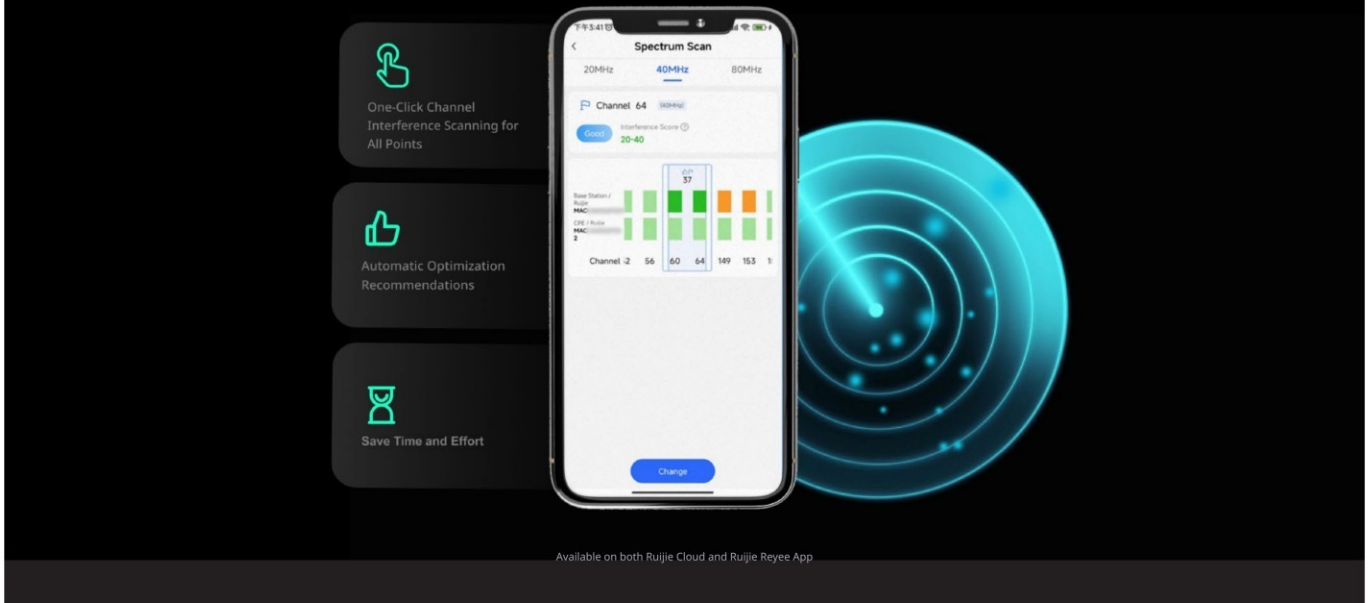
Alignment Tool

Your Big-Voice, Time-Saver Guide



Spectrum Scan and Link Optimization

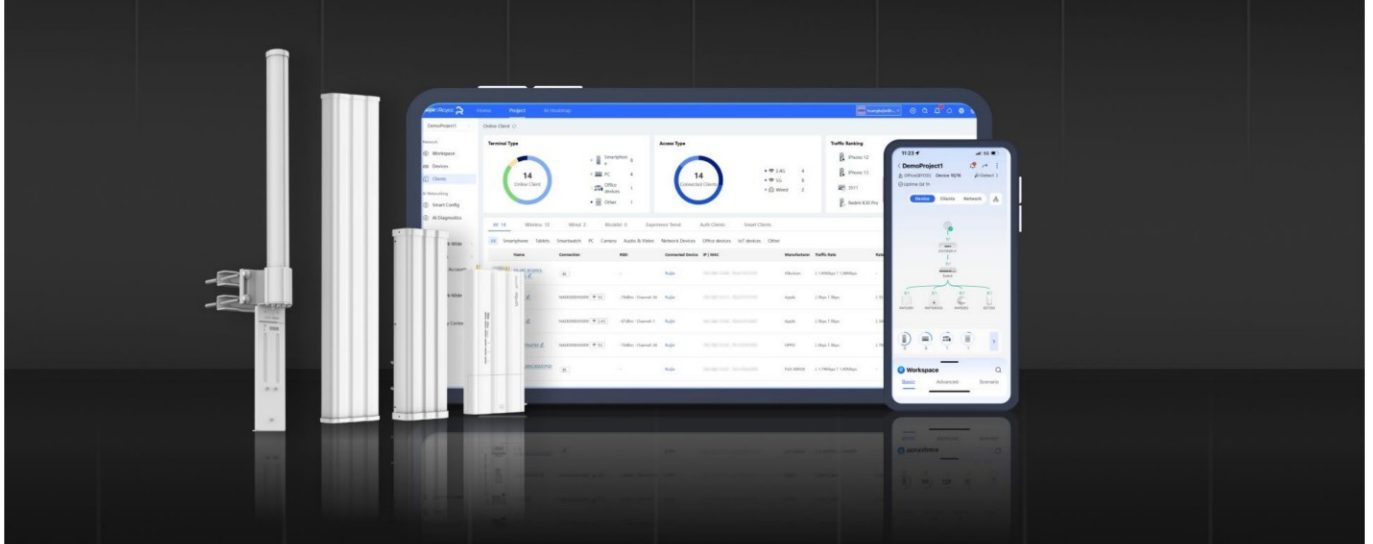
Thumbs-Up Guide



Highlight Features

Cloud: Make Your Business Easy

- Quick Setup
- All-in-one Cloud
- Monitoring based on Real, Complete Topology
- Identifying Issues by Auto-Alarm



Product Information

Model	RG-ANT16S-120
Product Type	Antenna
Accessory	No

Hardware Specifications

Model	RG-ANT16S-120
Applicable Scenarios	
Applicable Scenarios	WISP
Antenna	
Antenna	5 GHz: 2 x 2 Panel antenna, horizontal: 120°, vertical: 10°
Antenna gain (5 GHz)	16 dBi
Antenna horizontal orientation	120°
Antenna vertical orientation	10°
Dimensions and Weight	
Weight	0.79 kg (1.74 lbs) (without packaging materials)
Shipping weight	2.5 kg (5.51 lbs)
Product dimensions (W x D x H)	110 mm x 48.5 mm x 361 mm (4.33 in. x 1.91 in. x 14.21 in.) (excluding mounting bracket)
Package dimensions (W x D x H)	430 mm x 170 mm x 150mm (16.93 in. x 6.69 in. x 5.91 in.)
Color	Elegant white
Environment and Reliability	
Mounting options	Pole
Operating temperature	-40°C to +80°C (-40°F to +176°F)
Storage temperature	-40°C to +85°C (-40°F to +185°F)
Operating humidity	5% RH to 95% RH (non-condensing)

/ Hardware Specifications

Model	RG-ANT16S-120
Storage humidity	5% RH to 95% RH (non-condensing)
Altitude	Operating altitude: -500 m to +5,000 m (-1,640.42 ft. to +16,404.20 ft.) Storage altitude: -500 m to +5,000 m (-1,640.42 ft. to +16,404.20 ft.)
MTBF	400,000 hours (about 45 years)
Cooling	Natural cooling
IP rating	IP55

Package Contents

Model	RG-ANT16S-120
Device	
Device	1
Accessories	
RF cable	2
Mounting bracket	1 x U bracket 1 x Pole bracket 1 x Pole clamp
Screw	6 x Hexagon Flange Nut 2 x Phillips Hexagon Flange Bolt 2 x Cup Head Square Neck Bolt with Large Head
Protective cover	1
Manual	
User Manual	1

Ruijie | ReYee

 Redefine your easy network



Ruijie Networks Co., Ltd.

Official Website: <https://Reyee.Ruijie.com>