

DS-3E0326P-E/M(C) 100 Mbps PoE Switch



DS-3E0326P-E/M(C) switches are layer 2 100 Mbps PoE switches, providing PoE power supply technology and Gigabit network design on the basis of network access to ensure stable data upload. The switches support long range, port isolation, and PoE watchdog functions.

- **Intelligent PoE Management**
When the power supply exceeds the limit, PoE ports intelligently manage the power supply, which extends the switch lifetime.
- **Up to 300 m Long Range PoE Transmission**
The distance between IPCs and switch can reach maximum 300 meters.
- **4/8-Core Adaptive Power Supply with Less Power Loss**
8-core power supply reduces the power loss on cables.
- **6 kV Surge Protection to Improve Reliability in Harsh Environment**
The built-in surge protection device protects the switch from the sudden lightning surge in harsh environment.
- **Design for Video Transmission**
VIP port ensures important data transmission when network congestion occurs.

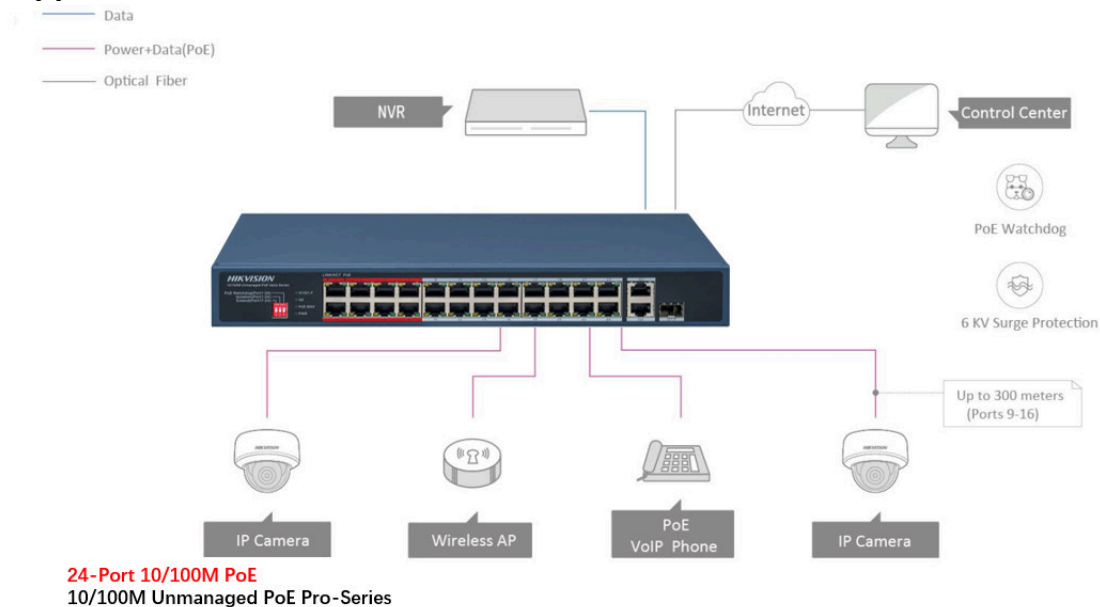
▪ Specification

Model		DS-3E0326P-E/M(C)
General	Shell	Metal material
	Net Weight	1.90 kg (4.20 lb)
	Gross Weight	2.65 kg (5.84 lb)
	Dimensions (W × H × D)	335.0 mm × 44.5 mm × 226.0 mm (13.19" × 1.75" × 8.90")
	Operating Temperature	0 °C to 45 °C (32 °F to 113 °F)
	Storage Temperature	-40 °C to 85 °C (-40 °F to 185 °F)
	Operating Humidity	5% to 95% (no condensation)
	Relative Humidity	5% to 95% (no condensation)
	Power Supply	100~240 V AC, 50/60 Hz, Max. 4 A
	Max. Power Consumption	250 W
	Power Consumption in Idle	20 W
	Installation Mode	Desk-Mounted,Wall-Mounted
	Surge Protection	6 kV
Network Parameters	Ports	24 × 10/100 Mbps PoE port,1× Gigabit RJ45 port,1 × Gigabit combo
	MAC Address Table	8 K
	Switching Capacity	8.8 Gbps
	Packet Forwarding Rate	6.55 Mpps
	Internal Cache	4 Mbits
PoE Power Supply	PoE Standard	IEEE 802.3af;IEEE 802.3at
	PoE Power Pin	8-pin power: 1/2(-), 3/6(+), 4/5(+), 7/8(-)
	PoE Port	PoE: Ports 1 to 24
	Max. Port Power	30 W
	PoE Power Budget	230 W
Dialing Function	Long Range	Ports 17 to 24: up to 300 m. Long range performance may vary depend on camera model or cable condition.
	Port Isolation	Ports 1 to 24: port isolation mode to improve network security. Ports in an isolation group cannot communicate with each other, but they can communicate with ports outside the isolation group.
	PoE Watchdog	Ports 1 to 24: auto detect and restart the cameras that do not respond.
Approval	EMC	FCC (47 CFR Part 15, Subpart B),CE-EMC (EN 55032: 2015+A11: 2020, EN IEC 61000-3-2: 2019, EN 61000-3-3: 2013+A1: 2019, EN 50130-4: 2011+A1: 2014, EN 55035: 2017+A11: 2020),IC (ICES-003: Issue 7:2020),RCM (AS/NZS CISPR 32: 2015)
	Safety	UL (UL 60950-1),CB (AMD1:2009, AMD2:2013, IEC 62368-1: 2014 (Second Edition), CE-LVD (EN 62368-1: 2014+A11: 2017)
	Chemistry	CE-RoHS (201165EU); WEEE (201219EU); Reach (Regulation (EC) No.19072006)

▪ Available Model

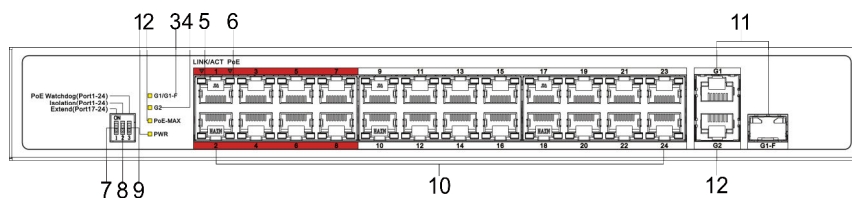
DS-3E0326P-E/M(C)

▪ Typical Application



▪ Physical Interface

Front Panel



No.	Indicator/Port	Description
1	PWR Indicator	<ul style="list-style-type: none"> ● Solid on: The switch is powered on normally. ● Unlit: No power supply is connected or power supply is abnormal.
2	PoE-MAX Indicator	<ul style="list-style-type: none"> ● Solid on: The output power of the switch is about to reach or has reached the upper limit. The power supply may be abnormal if more devices are connected. ● Unlit: The switch does not supply power to a powered device (PD), or the switch supplies power to a PD normally and the output power of the switch does not reach the upper limit. (The PoE-MAX indicator will be unlit in five seconds after the output power of the switch reaches the upper limit.)
3	Gigabit RJ45 Port Indicator (when gigabit RJ45 port G1 is connected)	<ul style="list-style-type: none"> ● Solid on: The port is connected. ● Flashing: The port is transmitting data. ● Unlit: The port is disconnected or connection is abnormal.
	Gigabit SFP Fiber Optical Port Indicator (when gigabit SFP fiber optical port G1-F is connected)	<ul style="list-style-type: none"> ● Solid on: The gigabit SFP fiber optical port is connected. ● Flashing: The gigabit SFP fiber optical port is transmitting data. ● Unlit: The gigabit SFP fiber optical port is disconnected or connection is abnormal.
4	Gigabit RJ45 Port Indicator	<ul style="list-style-type: none"> ● Solid on: The port is connected. ● Flashing: The port is transmitting data. ● Unlit: The port is disconnected or connection is abnormal.
5	LINK/ACT Indicator (for switches without indicator panels)	<ul style="list-style-type: none"> ● Solid on: The port is connected. ● Flashing: The port is transmitting data. ● Unlit: The port is disconnected or connection is abnormal.
	10/100 Mbps RJ45 Port Indicator (for switches with indicator panels)	<ul style="list-style-type: none"> ● Solid on: The port is connected. ● Flashing: The port is transmitting data. ● Unlit: The port is disconnected or connection is abnormal.
6	PoE Indicator (for switches	<ul style="list-style-type: none"> ● Solid on: The switch supplies power to a PD normally.

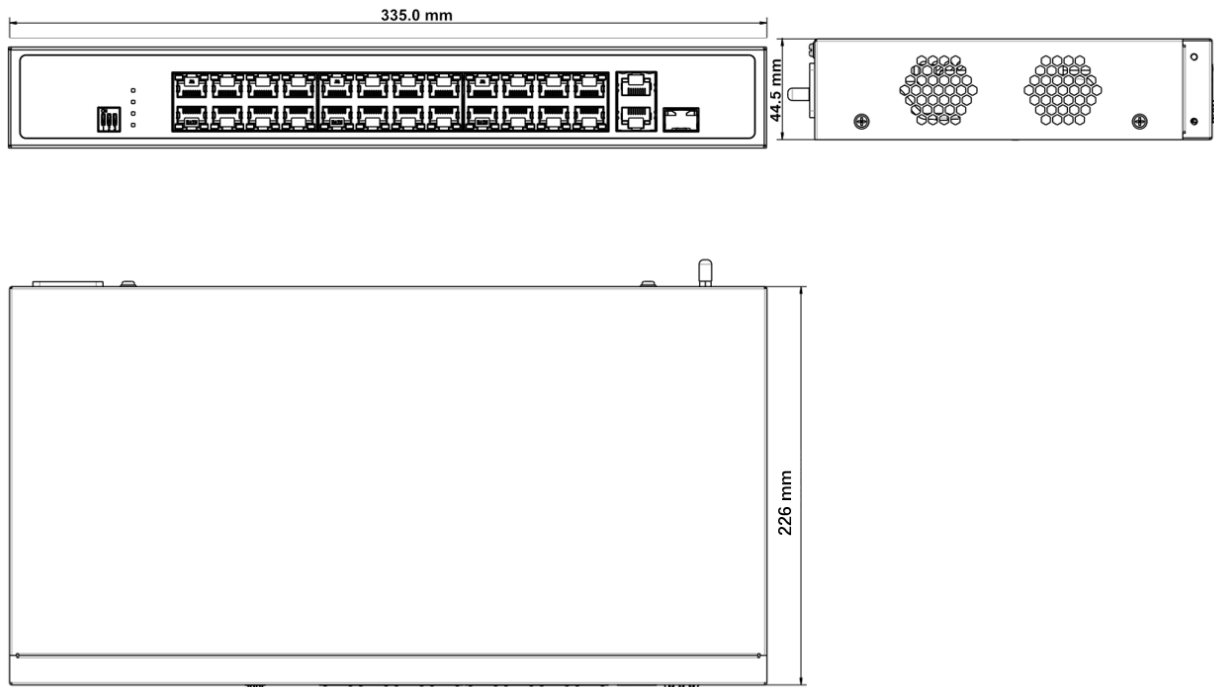
	without indicator panels) PoE Status Indicator of 10/100 Mbps RJ45 Port (for switches with indicator panels)	<ul style="list-style-type: none"> ● Unlit: The switch is disconnected from a PD or power supply is abnormal. ● Solid on: The switch supplies power to a PD normally. ● Unlit: The switch is disconnected from a PD or power supply is abnormal.
7	EXTEND DIP Switch	<p>Enable or disable long-range transmission (EXTEND mode).</p> <ul style="list-style-type: none"> ● When the DIP switch is set to "ON", the corresponding ports support up to 300 m network transmission with a port rate of 10 Mbps. ● When the DIP switch is set to "OFF", the corresponding ports support up to 100 m network transmission with a port rate of 100 Mbps.
8	Isolation DIP Switch	<p>Enable or disable port isolation.</p> <ul style="list-style-type: none"> ● When the DIP switch is set to "ON", port isolation is enabled. Ports in the same isolation group cannot communicate with each other. Data transmission via each port is isolated to enhance network security. ● When the DIP switch is switched to "OFF", port isolation is disabled. Ports can communicate with each other.
9	PoE Watchdog DIP Switch	<p>Enable or disable PoE watchdog.</p> <ul style="list-style-type: none"> ● When the DIP switch is set to "ON", PoE watchdog is enabled to automatically detect device connection statuses of corresponding ports and restart ports in case of communication failures. ● When the DIP switch is set to "OFF", PoE watchdog is disabled. Corresponding ports are no longer automatically detected and restarted in case of communication failures.
10	10/100 Mbps PoE RJ45 Port	Used for connection to a PD via a network cable.
11	Gigabit Combo Port (G1/G1-F)	<ul style="list-style-type: none"> ● When connected to a network cable, the combo port is a RJ45 port. ● When plugged into with an optical module and connected to an optical fiber, the combo port functions as a fiber optical port.
12	Gigabit RJ45 Port (G2)	Used for connection to another device via a network cable.

Rear Panel



No.	Indicator/Port	Description
1	Grounding Terminal	Used for connecting to the grounding cable to protect the switch from lightning.
2	Power Supply	Use the attached power cord to connect the switch to a socket.

▪ **Dimension**



Headquarters

No.555 Qianmo Road, Binjiang District,
Hangzhou 310051, China
T +86-571-8807-5998
www.hikvision.com



Follow us on social media to get the latest product and solution information.

