








AC750 Wireless Dual Band Router

-  433 Mbps + 300 Mbps[†]
Dual Band Wi-Fi
-  Superior Coverage
-  Router + AP + RE Multiple Modes
-  Easy Setup with Tether App
-  WPA3 Security[‡]

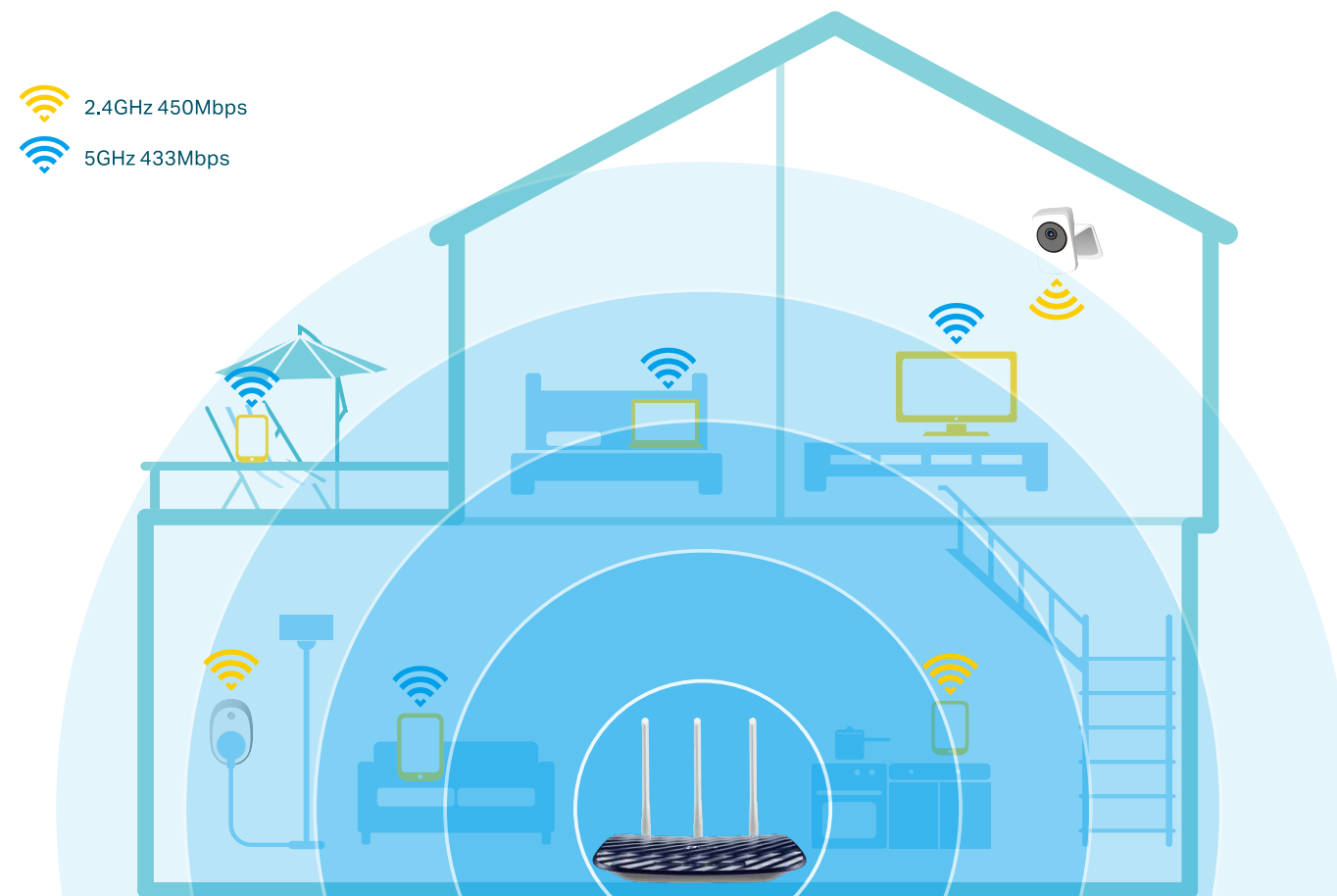
Archer C20



Highlights

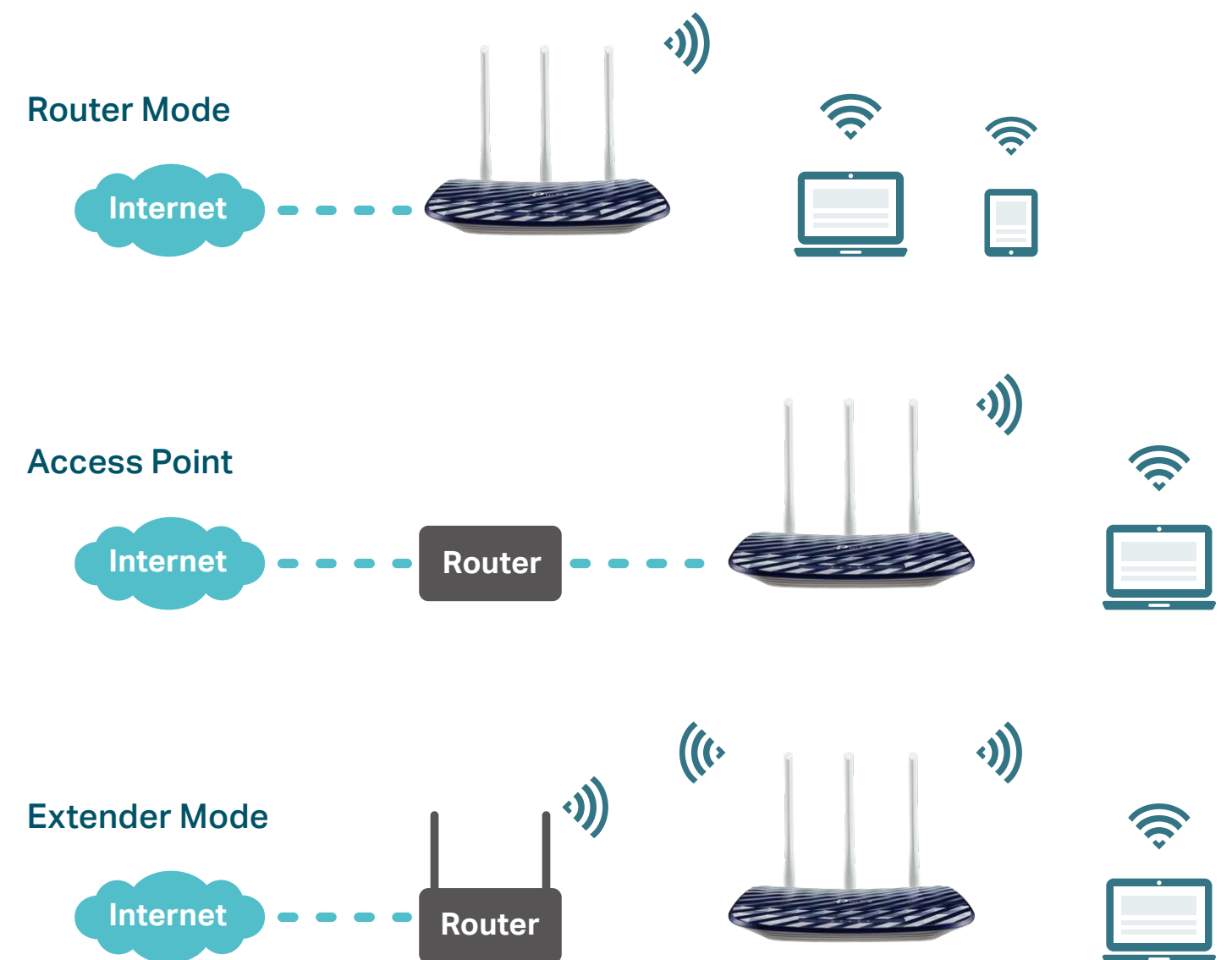
Stream-Ready AC Wi-Fi for Your Home

Press play and forget about buffering with the Archer C20. The Wireless AC router's superior coverage lets you enjoy a high-speed network for all of your internet needs, whether for work or play. With rates up to 300Mbps, the 2.4GHz band is perfect for sending emails, browsing the web, listening to music and so on. For more demanding applications, the 5GHz band delivers up to 433Mbps for HD streaming and gaming.



Multi-Mode Function

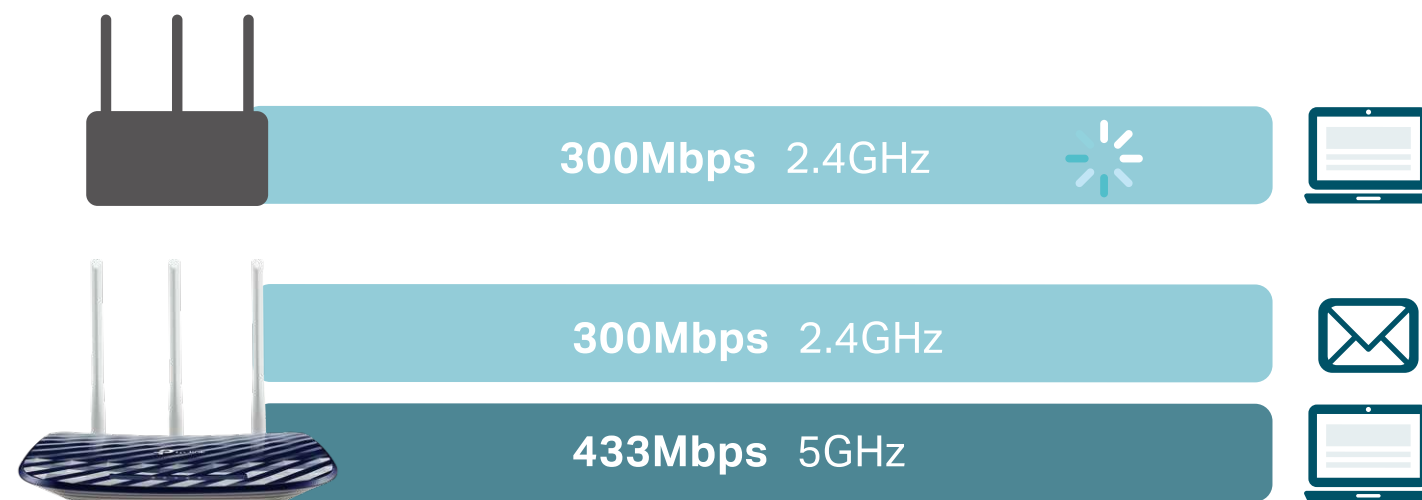
In addition to serving as a wireless AC router, the Archer C20 can also function as a wireless access point or range extender, providing you with the flexibility you need in any situation. The mode can be easily setup in the web management page or Tether App.



Highlights

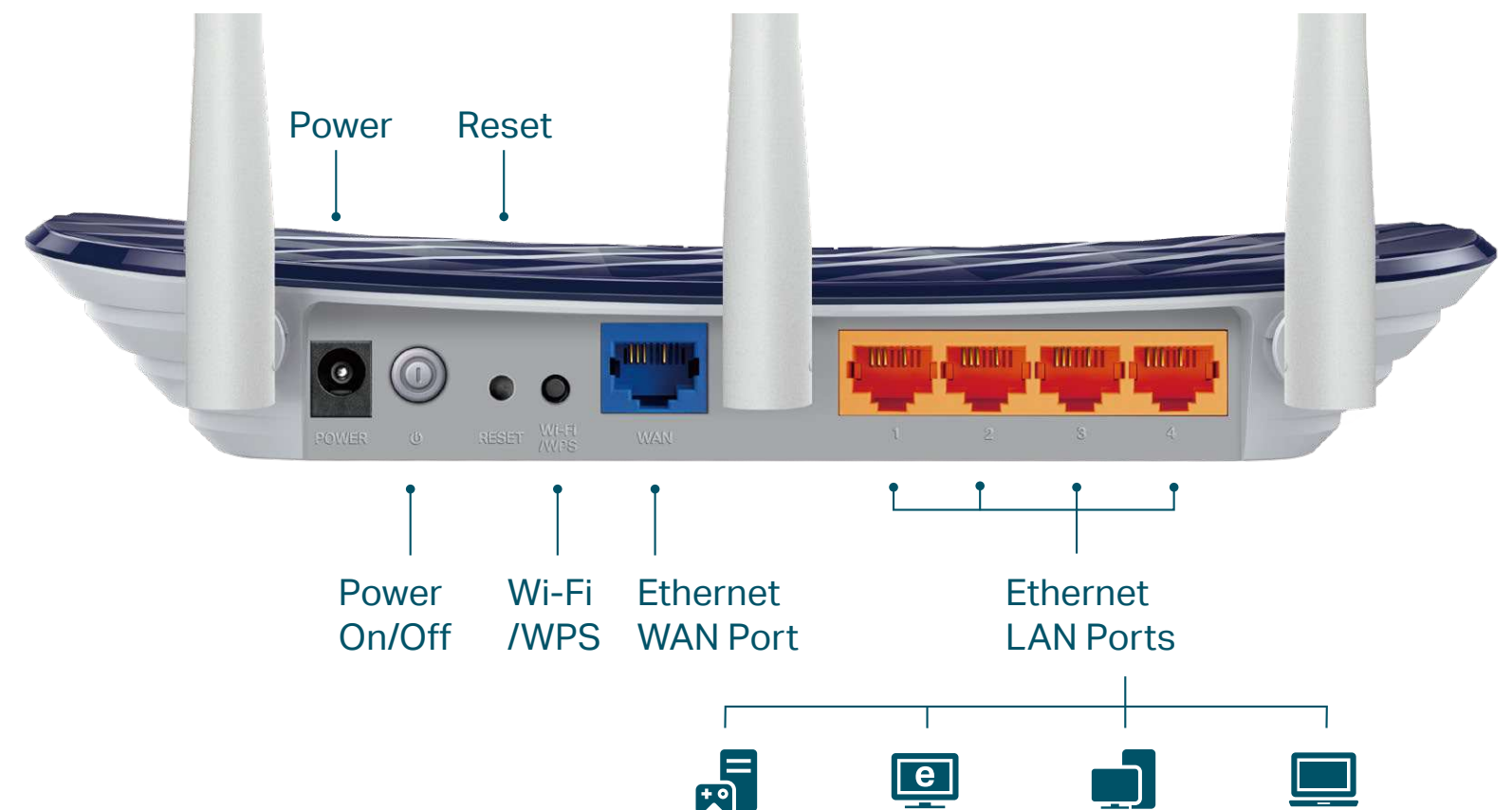
Strong, Far-Reaching Wi-Fi

AC750 (300 Mbps on 2.4 GHz + 433 Mbps on 5 GHz) Wi-Fi for reliable connections.



Fast Ethernet

Enjoy fast, reliable wired connections for gaming and streaming in the best quality.



Features



Reliability

- Ultimate Wireless Speed – 300Mbps on 2.4GHz and 433Mbps on 5GHz Wi-Fi speed for lag-free work
- 802.11ac – Backward compatible with 802.11b/g/n products
- IPTV – Support IGMP Proxy/Snooping, Bridge and Tag VLAN to optimize IPTV streaming
- Easy Bandwidth Management – Bandwidth Control allocates necessary speed of each connected device to ensure quality of multimedia streaming
- IPV6 – Compatible with IPv6 (Internet Protocol version 6)



Ease of Use

- Intuitive Web UI – Ensure quick and simple installation without hassle
- Easy On/Off – Turn On/Off wireless radio using the Wi-Fi On/Off button
- Power On/Off – Conveniently power on or off your router as required
- WPS – Make secure wireless connection quick and easy with the push of a button
- Hassle-free Management with Tether App – Network management is made easy with the TP-Link Tether App, available on any Android or iOS device



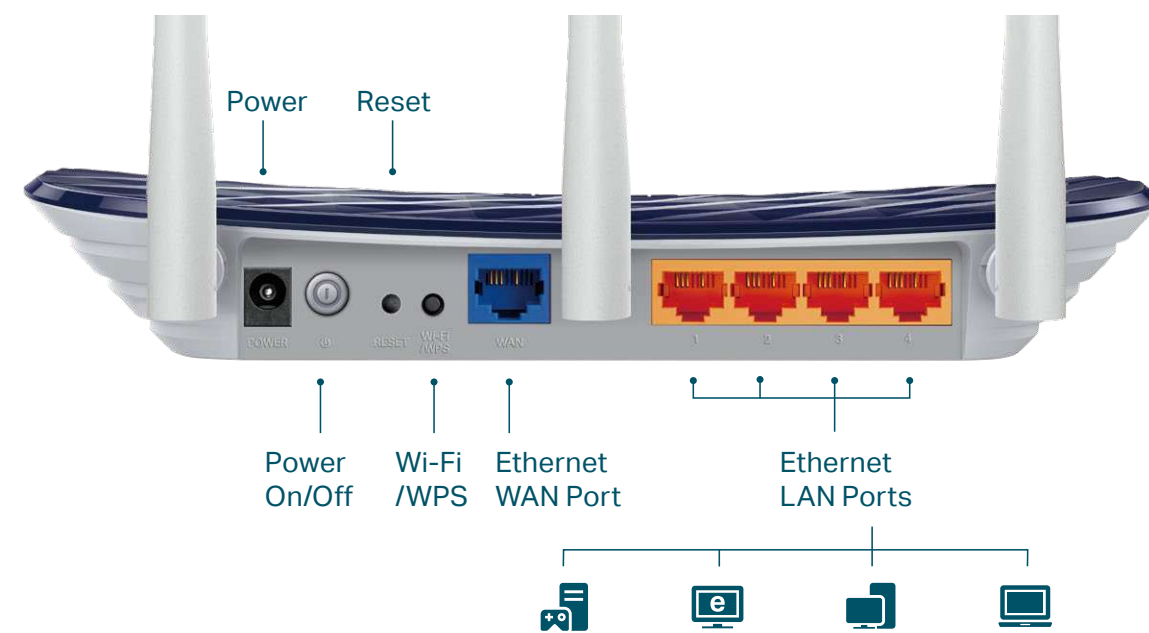
Security

- Guest Network – Provide separate access for guests while securing the home network
- Access Control – Establish a whitelist or blacklist to allow or block certain devices from accessing the internet
- Parental Controls – Manage when and how connected devices can access the internet
- Encryptions for Secure Network – WPA-PSK/WPA2-PSK/WPA3-Personal encryptions provide active protection against security threats

Specifications

Hardware

- Ethernet Ports: 4 x 10/100Mbps LAN Ports, 1 x 10/100Mbps WAN Port
- Buttons: Reset Button, Power On/Off Button, Wi-Fi/WPS Button
- Antennas: 3 Fixed Omni Directional Antennas
- External Power Supply: 9VDC/0.6A
- Dimensions (W x D x H): 9.1 x 5.7 x 1.4 in. (230 x 144 x 35mm)



Wireless

- Wireless Standards: IEEE 802.11ac/n/a 5GHz, IEEE 802.11b/g/n 2.4GHz
- Frequency: 2.4GHz and 5GHz
- Signal Rate:
 - 5GHz: Up to 433Mbps
 - 2.4GHz: Up to 300Mbps
- Reception Sensitivity:
 - 5GHz:
 - 11a 6m: -90dBm
 - 11ac VHT80 mcs9: -60dBm
 - 2.4GHz:
 - 11n HT20 mcs0: -87dBm
 - 11n HT40 mcs7: -63 dBm
- Wireless Function: Enable/Disable Wireless Radio, WDS Bridge, WMM, Wireless Statistics
- Wireless Security: WPA / WPA2, WPA-PSK/ WPA2-PSK, WPA3-Personal encryption

Specifications

Software

- WAN Type: Dynamic IP, Static IP, PPPoE, PPTP(Dual Access), L2TP(Dual Access), Bigpond
- DHCP: Server, DHCP Client List, Address Reservation
- Quality of Service: WMM, Bandwidth Control
- Port Forwarding: Virtual Server, Port Triggering, UPnP, DMZ
- Dynamic DNS: DynDns, NO-IP
- Access Control: Parental Control, Local Management Control, Host list, Access Schedule, Rule Management
- Firewall Security: DoS, SPI Firewall, IP Address Filter/MAC Address Filter/Domain Filter, IP and MAC Address Binding
- Protocols: IPv4, IPv6
- Management: Access Control, Local Management, Remote Management
- Guest Network: 2.4GHz guest network, 5GHz guest network

Others

- Certification
FCC, CE, RoHS
- Requirements
Microsoft Windows 10/8.1/8/7/Vista/XP/2000/NT/98SE, MAC OS, NetWare, UNIX or Linux
Internet Explorer 11, Firefox 12.0, Chrome 20.0, Safari 4.0, or other Java-enabled browser
Cable or DSL Modem
Subscription with an Internet Service Provider (for internet access)
- Environment
Operating Temperature: 0°C~40°C (32°F ~104°F)
Storage Temperature: -40°C~60°C (-40°F ~140°F)
Operating Humidity: 10%~90% non-condensing
Storage Humidity: 5%~90% non-condensing
- Package Contents
Wireless Router Archer C20
Power Adapter
RJ-45 Ethernet Cable
Quick Installation Guide



For more information, please visit

https://www.tp-link.com/products/details/?model=Archer+C20_V6

or scan the QR code left

This device complies with part 15 of the FCC Rules. Operation is subject to the following two conditions: (1) This device may not cause harmful interference, and (2) this device must accept any interference received, including interference that may cause undesired operation.

Attention: This device may only be used indoors in all EU member states, EFTA countries and Northern Ireland.

Attention: This device may only be used indoors in Great Britain.

Specifications are subject to change without notice. All the brands and product names are trademarks or registered trademarks of their respective holders.

¹Maximum wireless signal rates are the physical rates derived from IEEE Standard 802.11 specifications. Actual wireless data throughput and wireless coverage are not guaranteed and will vary as a result of network conditions, client limitations, and environmental factors, including building materials, obstacles, volume and density of traffic, and client location.

[†]Use of WPA3 requires clients to also support the corresponding feature.

©2023 TP-Link

www.tp-link.com

TP-Link AC750 Wireless Dual Band Router Archer C20