




AX3000 Multi-Gigabit Wi-Fi 6 Router


Faster. Broader. Unstoppable.




Archer AX55 Pro



 Super-Fast Wi-Fi
Up to 3.0 Gbps[†]

 Broad Coverage
4 High-Performance Antennas

 Connect More Devices
with OFDMA[‡]

 Easy Sharing with
a USB Port

Highlights

Wi-Fi 6^E Faster. Broader. Unstoppable.

The Archer AX55 Pro, based on the next generation Wi-Fi 6 (802.11ax) technology, takes your Wi-Fi to the next level while being backwards compatible with previous generations (802.11 a/b/g/n/ac standards) Wi-Fi.



Super Fast Wi-Fi

Enjoy full access to 8K streaming and high-speed downloading with HE160 on the 5 GHz band providing doubled bandwidth.[‡]



Connect Numerous Devices

Allow more applications to run at the same time. OFDMA transmits data to multiple devices simultaneously across 4 streams, drastically reducing latency.[‡]



Smart Power Saving

Conserve the power of your mobile devices by scheduling the connection time of battery-powered devices with Target Wake Time.[‡]



Backwards Compatible

Take your Wi-Fi to the next level while being backwards compatible with 802.11 a/b/g/n/ac Wi-Fi standards.

TP-Link HomeShield

Manage online time and block inappropriate contents to keep families healthy online with Parental Controls. Quality of Services (QoS) and Network Protection further keep your home network smooth and safe.[^]



Network Protection



Parental Controls



Quality of Service (QoS)

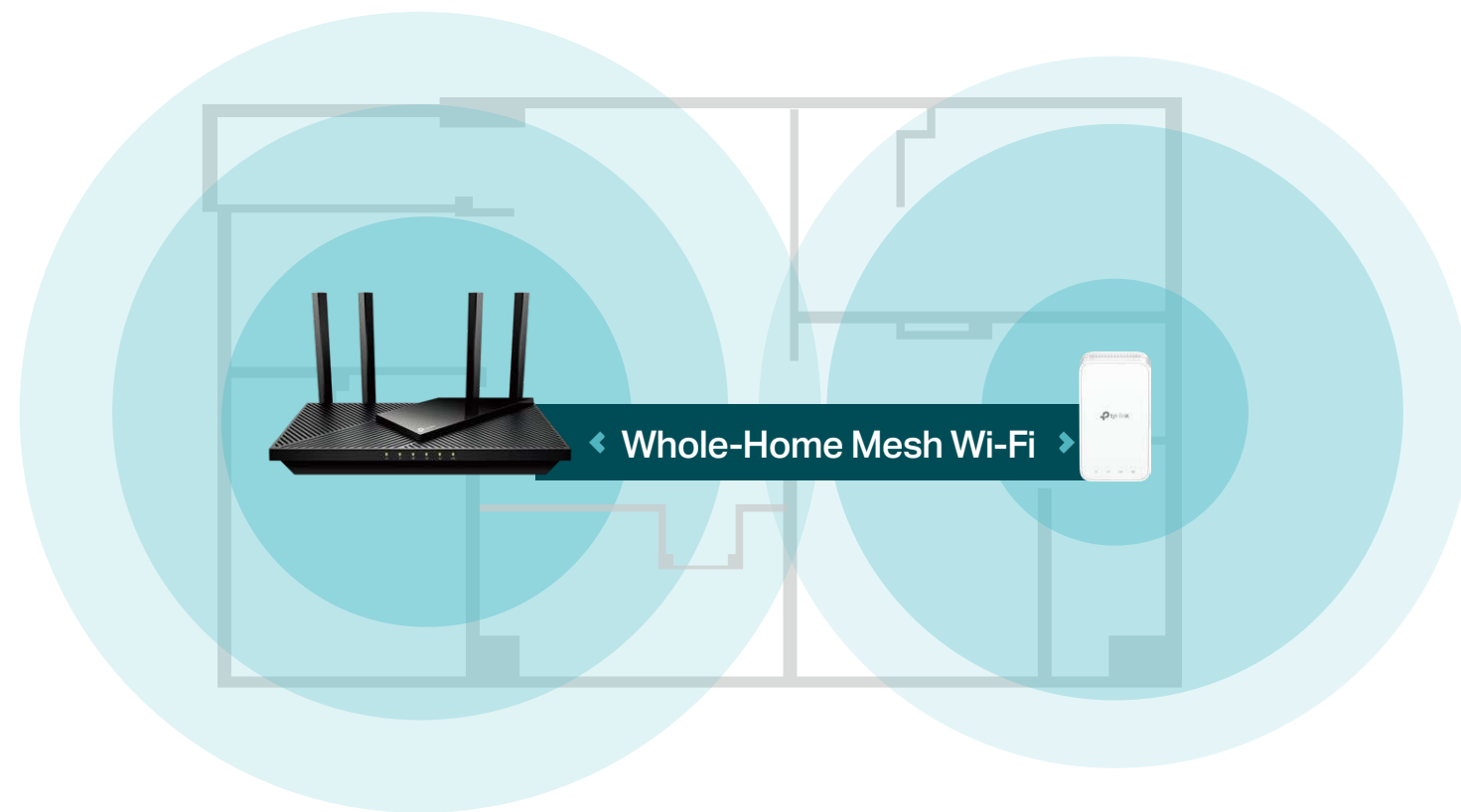


Comprehensive Reports

Highlights

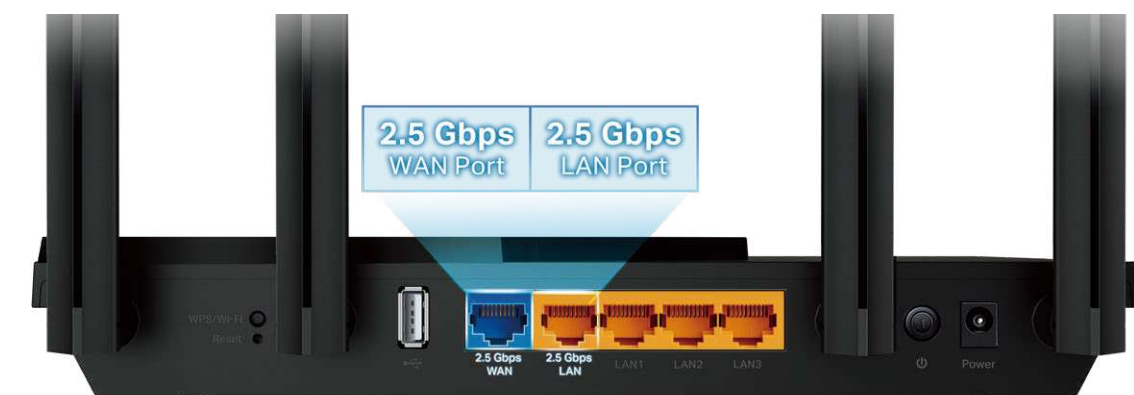
Flexible Whole-Home Wi-Fi

Four high-performance antennas and Beamforming deliver broad coverage. Furthermore, Archer AX55 Pro is compatible with EasyMesh to form seamless whole home mesh Wi-Fi, preventing drops and lag when moving between signals.***



Two 2.5 Gbps Ports for Multi-Gig Internet Connectivity

Equipped with two 2.5 Gbps ports, Archer AX55 Pro makes full use of gigabit speeds from your local ISP, provides up to 2.5× faster data-transfer speeds for bandwidth-demanding tasks, and unlocks the full potential of Wi-Fi 6.** The additional three gigabit ports and USB port make it an ideal solution for future-proofing your home network.



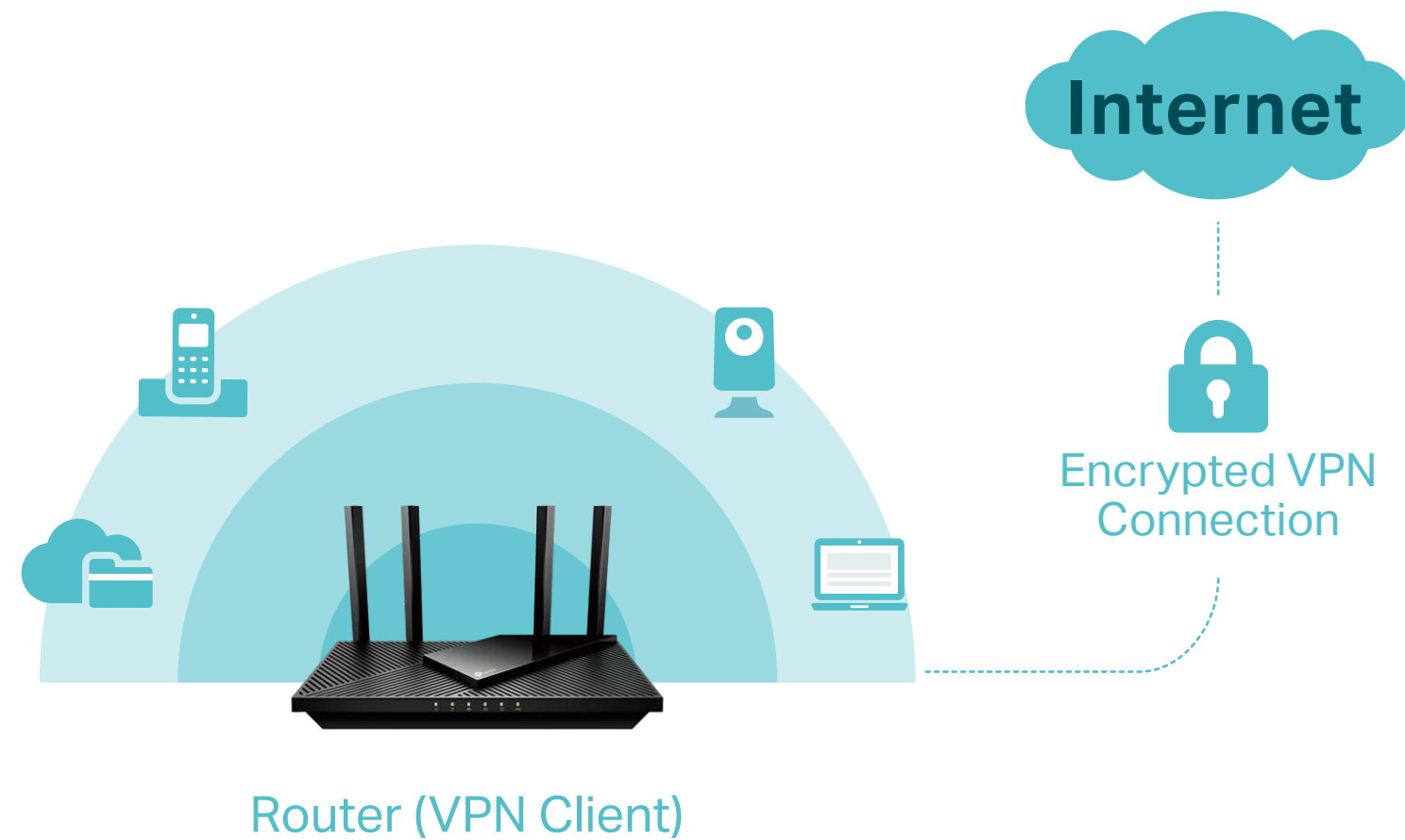
2.5 Gbps Internet Access

2.5 Gbps Wired Connection

Highlights

Work from Home with VPN

Allow specified devices in your home network to access remote VPN servers without needing to install VPN software on every device. Archer AX55 Pro can run both the VPN and ordinary internet connections at the same time, delivering security and flexibility.



WPA3 Security

The latest Wi-Fi security protocol, WPA3, brings new capabilities to improve cybersecurity. More secure encryption in Wi-Fi password safety and enhanced protection against brute-force attacks combine to safeguard your home Wi-Fi.*



Features



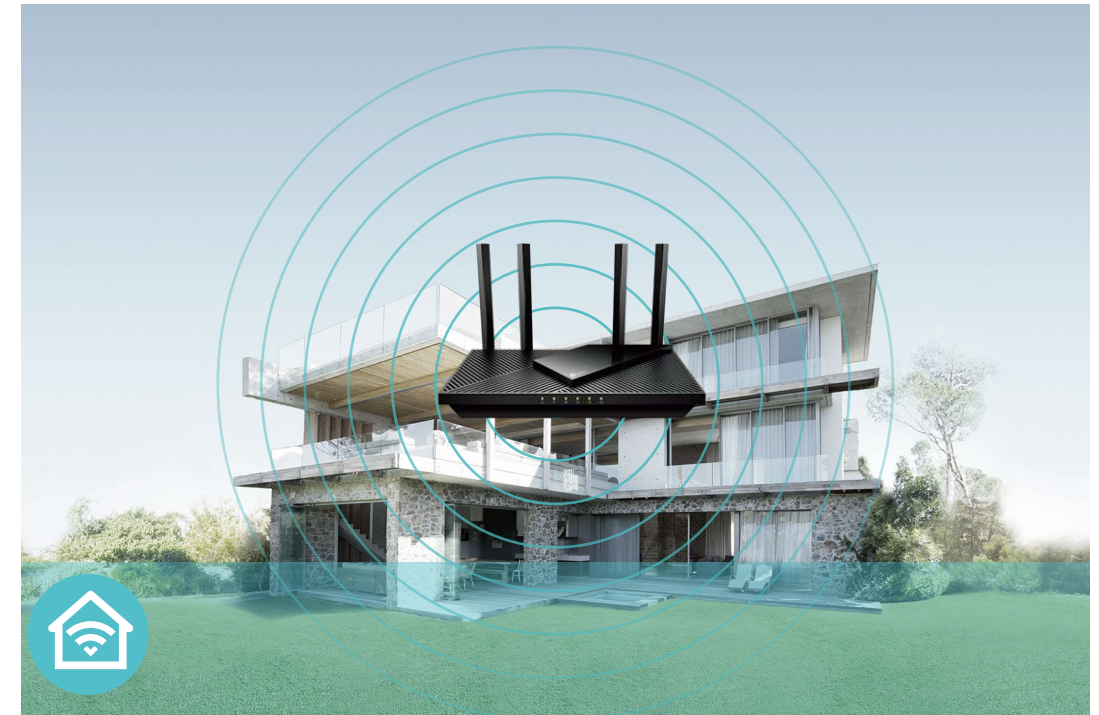
Unmatched Speeds

- **Faster Dual-Band AX3000 Wi-Fi** – Up to 3.0 Gbps (2402 Mbps + 574 Mbps) WiFi for faster browsing, streaming, and downloading, all at the same time.†
- **Wi-Fi 6 Technology** – Wi-Fi 6 (802.11ax) features advanced technologies, including OFDMA, HE160, and 1024-QAM, drastically increasing the speed and efficiency.‡
- **160 MHz Channel** – Double the data at peak transmission time on a single stream.‡
- **Smart Connect** – Intelligently assigns each device to the best Wi-Fi band for optimal performance.
- **Two 2.5 Gbps Multi-Gigabit Ports** – 1 × 2.5 Gbps WAN port + 1 × 2.5 Gbps LAN port + 3 × Gigabit LAN ports + 1 × USB 2.0 port ensure max flexibility and boosted throughput.



Reliable Connections

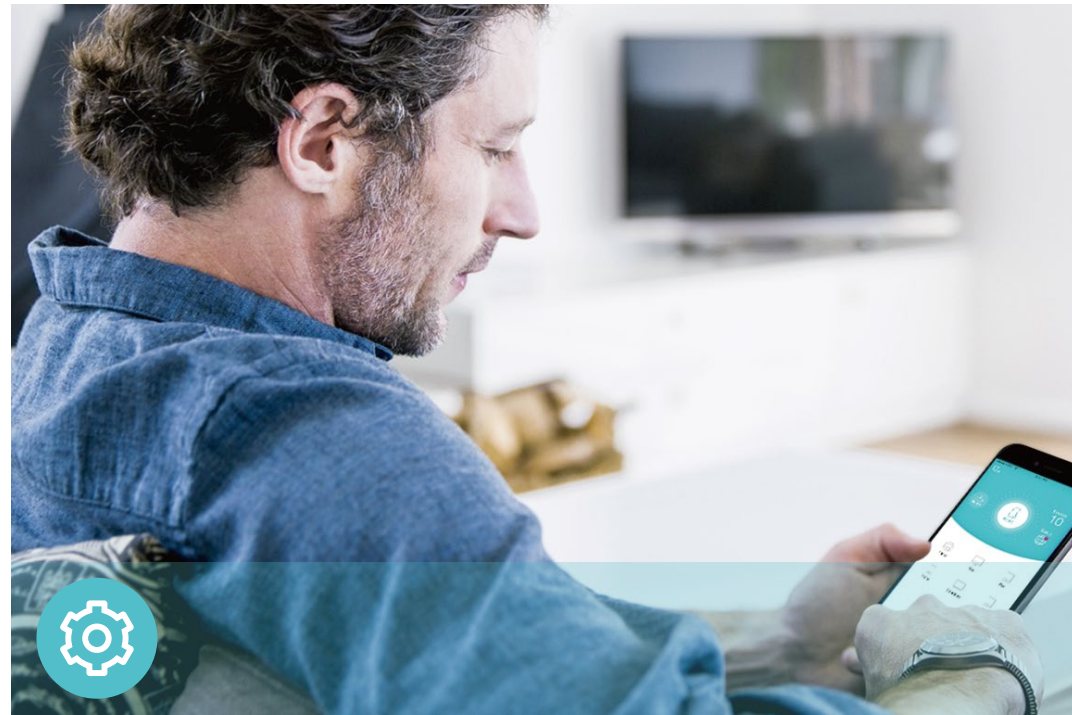
- **Connect More Devices** – OFDMA technology largely increases capacity to enable simultaneous transmission to more devices.‡
- **Improved Cooling Design** – A larger heat sink and refined case design cool the Wi-Fi 6 system for more stable operation.



Broad Wi-Fi Range

- **Maximized Coverage** – Four high-gain antennas equipped with Beamforming ensure vast coverage.
- **Beamforming Technology** – Concentrates Wi-Fi signals towards individual devices to ensure stronger connections.
- **Compatible with EasyMesh** – Flexibly create Whole Home Wi-Fi with Archer AX55 Pro by adding a EasyMesh device.***

Features



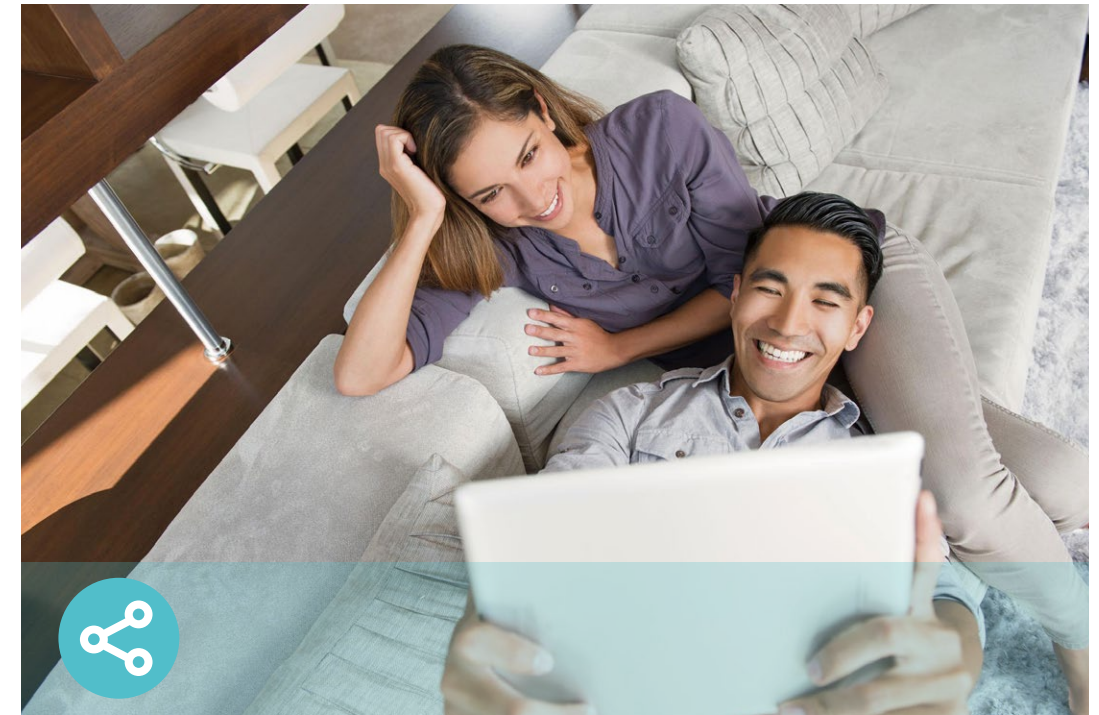
Ease of Use

- Hassle-free Management with Tether App – Network management is made easy with the TP-Link Tether app, available on any Android and iOS device.
- Intuitive Web UI – Ensures quick and simple installation without hassle.
- WPS (Wi-Fi Protected Setup) – Help you to quickly and securely connect your devices to the router's network with a tap.
- Backwards Compatible – Take your Wi-Fi to the next level while being backwards compatible with existing 802.11 a/b/g/n/ac Wi-Fi standards.
- Compatible with Alexa – Control your router via voice commands and make your life smarter and easier with Amazon Alexa.



Robust Security

- HomeShield – Enhanced security defends against the latest cyber threats.^Δ
- Parental Controls – Manage online time and block inappropriate content to control your family's digital habits.
- Guest Network – Provides separate access for guests to secure the home network.
- Advanced WPA3 Encryptions – The latest WiFi security protocol, WPA3, brings new capabilities to improve cybersecurity in personal networks.*
- Access Control – Establishes an Allow List or a Deny List to allow or restrict certain devices to access the internet.



Value-Added Features

- VPN Client Supported – Allow devices in your home network to access remote VPN servers without needing to install VPN software on every device.
- USB 2.0 Port – Connect external storage devices to rapidly share files, photos, and videos.
- Built-in Media Server – Allows you to play music, watch videos and view photos from any device on your network.
- More Values – Advanced functions like IPTV, IPv6 compatibility, and Access Point mode bring more values.

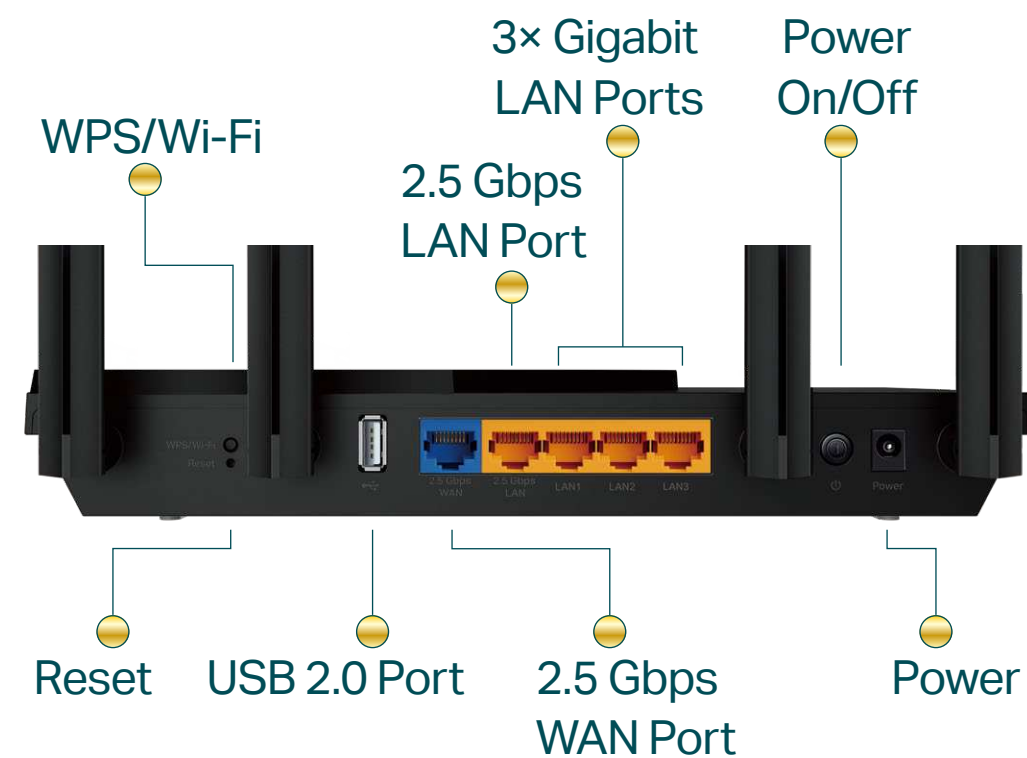
Specifications

Wireless

- Standards: IEEE 802.11ax/ac/n/a 5 GHz, IEEE 802.11ax/n/b/g 2.4 GHz
- WiFi Speeds: 2402 Mbps (5 GHz) + 574 Mbps (2.4 GHz)
- WiFi Range: 4× Fixed High-Performance Antennas, Beamforming, High-Power FEM
- WiFi Capacity: Dual-Band, OFDMA, DFS, 4 Streams
- Working Modes: Router Mode, Access Point Mode

Hardware

- Ethernet Ports: 1× 2.5 Gbps WAN Port, 1× 2.5 Gigabit LAN Port, 3× 1 Gbps LAN Ports
- USB Support: 1× USB 2.0 Port
- Buttons: Wi-Fi/WPS Button, Reset Button, Power On/Off Button



Security

- WiFi Encryption: WPA, WPA2, WPA3, WPA/WPA2-Enterprise (802.1x)
- Network Security: SPI Firewall, Access Control, IP & MAC Binding, Application Layer Gateway, HomeShield Security
- Guest Network: 1× 5 GHz Guest Network, 1× 2.4 GHz Guest Network
- VPN Client and Server: OpenVPN, PPTP, L2TP, WireGuard

Software

- Protocols: IPv4, IPv6
- Service Kits: HomeShield
- EasyMesh: Supported
- Parental Controls: HomeShield Parental Controls
- WAN Types: Dynamic IP, Static IP, PPPoE, PPTP, L2TP
- Quality of Service: QoS by Device
- Cloud Service: Auto Firmware Upgrade, OTA Firmware Upgrade, TP-Link ID, DDNS
- NAT Forwarding: Port Forwarding, Port Triggering, DMZ, UPnP
- DDNS: TP-Link, NO-IP, DynDNS

Specifications

Physical

- Dimensions: 10.2 × 5.3 × 1.5 in (261.0 × 134.5 × 41.0 mm)
- Package Contents:
 - Wireless Router Archer AX55 Pro
 - Power Adapter
 - RJ45 Ethernet Cable
 - Quick Installation Guide

Other

- System Requirements:
 - Internet Explorer, Firefox, Chrome, Safari, or other JavaScript-enabled browser
 - *You are recommended to use the latest version
 - Cable or DSL Modem (if needed)
 - Subscription with an internet service provider (for internet access)
- Certifications: FCC, RoHS
- Environment:
 - Operating Temperature: 0°C~40°C (32°F ~104°F)
 - Operating Humidity: 10%~90% non-condensing



For more information, please visit

https://www.tp-link.com/products/details/?model=Archer+AX55+Pro_V2

or scan the QR code left

¹Maximum wireless signal rates are the physical rates derived from IEEE Standard 802.11 specifications. Actual wireless data throughput, wireless coverage and number of connected devices are not guaranteed and will vary as a result of network conditions, client limitations, and environmental factors, including building materials, obstacles, volume and density of traffic, and client location.

²Use of 802.11ax (Wi-Fi 6) and its features including OFDMA, HE160, and TWT requires clients to also support corresponding features. The 160 MHz bandwidth may be unavailable in the 5 GHz band in some regions/countries due to regulatory restrictions. Actual power reduction by Target Wake Time may vary as a result of network conditions, client limitations, and environmental factors.

³The 802.11ax white paper defines standardized modifications to both the IEEE 802.11 physical layers (PHY) and the IEEE 802.11 Medium Access Control (MAC) layer as enabling at least one mode of operation capable of supporting improvement of at least four times the average throughput per station (measured at the MAC data service access point) in a dense deployment scenario.

⁴HomeShield includes the Free Basic Plan. Fees apply for the Pro Plan. Visit <https://www.tp-link.com/homeshield> for more information

*Use of WPA3 requires clients to support WPA3.

**Actual network speed may be limited by the rate of the product's Ethernet WAN or LAN port, the rate supported by the network cable, Internet service provider factors and other environmental conditions.

***TP-Link EasyMesh-compatible products can network with other devices that use EasyMesh. Failed connections may be due to firmware conflicts of different vendors. The EasyMesh-Compatible function is still being developed on some models and will be supported in subsequent software updates.

This router may not support all the mandatory features as ratified in IEEE 802.11ax specification.

Further software upgrade for feature availability may be required.

©2023 TP-Link

Test Data

- WiFi Transmission Power:
 - FCC: <24dBm (5.25GHz~5.35GHz&5.47GHz~5.725GHz), <30dBm (5.15GHz~5.25GHz&5.725GHz~5.850GHz), <30dBm (2.4GHz)
- WiFi Reception Sensitivity:
 - 2.4 GHz:
 - 11n HT20 MCS0: -96dBm, 11n HT20 MCS7: -78dBm,
 - 11n HT40 MCS0: -93dBm, 11n HT40 MCS7: -75dBm,
 - 11ax HE20 MCS0: -96dBm, 11ax HE20 MCS11: -66dBm,
 - 11ax HE40 MCS0: -93dBm, 11ac HE40 MCS11: -63dBm
 - 5 GHz:
 - 11ac VHT20 MCS0: -95dBm, 11ac VHT20 MCS11: -65dBm,
 - 11ac VHT40 MCS0: -92dBm, 11ac VHT40 MCS11: -62dBm,
 - 11ac VHT80 MCS0: -89dBm, 11ac VHT80 MCS11: -59dBm,
 - 11ax HE20 MCS0: -95dBm, 11ax HE20 MCS11: -65dBm,
 - 11ax HE40 MCS0: -92dBm, 11ax HE40 MCS11: -62dBm,
 - 11ax HE80 MCS0: -89dBm, 11ax HE80 MCS11: -59dBm,
 - 11ax HE160 MCS0: -86dBm, 11ax HE160 MCS11: -57dBm