



Pan/Tilt AI Home Security Wi-Fi Camera

Model: Tapo C225

Secure. Smart. Easy.



Physical Privacy Mode



Smart AI Detection and Notification



Smart Motion Tracking



Starlight Sensor



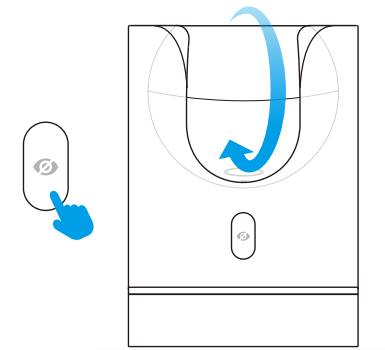
// Highlight

Physical Privacy Mode

Maintain privacy with the lens blocked by the housing when physical privacy mode is enabled.

Smart AI Detection and Notification

Smart AI identifies people, pets, and vehicles while also recognizing abnormal sounds, notifying users as needed.



// Features



850nm or 940nm Night Vision
Switch to the 940nm IR LED to watch over your baby without interrupting their sleep



Smart Motion Tracking
Tracks and follows a subject, keeping it within the camera's field of view



Field of View
360° horizontal range



Privacy Zone
Block customizable zones from being recorded



Activity Zone
Notifies you when activity is detected in specific zones



Cross-Line Detection
Notifies you when passing set boundaries



Sound and Light Alarm
Trigger sounds and light as an alarm when motion is detected



Two-Way Audio
Enables communication through a built-in microphone and speaker



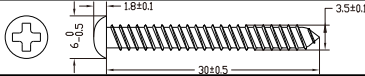
Easy Setup
Follow the in-app instructions to easily set up in minutes

// Specifications

Camera	Image Sensor	1/3" Progressive Scan CMOS Starlight Sensor
	Lens	Focal Length: 4.3mm Aperture: F1.6 Field of View: 95° (Diagonal), 81°(Horizontal), 40°(Vertical)
	Night Vision	1 × 850 nm IR LED (30 ft / 10 m) 2 × 940 nm IR LED (30 ft / 10 m)
	Day/Night Switch	IR-Cut Filter with Auto-Switching
	Lighting	/
	Interface & Button	1× RESET Button 1× Privacy Button 1× microSD Card Slot (Up to 512 GB)
	Hub Compatibility	/
Video & Audio	Maximum Resolution	2K QHD 4MP (2560 × 1440 px)
	Frame Rate	15/20/25/30 fps (Default 15fps)
	Digital Zoom	None
	Video Compression	H.264
	Live View	Yes
	Image Enhancement	3DNR WDR

Video & Audio	Audio Input & Output	Built-in Microphone and Speaker
	Audio Communication	Two-Way Audio with Noise Cancellation
	Siren Volume	93dB (Level measured at 4-inch/10-cm distance)
Storage	Local Storage	microSD Card Slot on Camera (Up to 512 GB)
	Cloud Storage	Tapo Care Cloud Storage Services (Subscription required)
Detection & Notification	Sensor	/
	AI Detection	Motion Detection Person Detection Pet Detection Vehicle Detection Line-Crossing Detection Camera Tampering Baby Crying Detection Cat Meows Detection Dog Barks Detection Glass Break Detection
	Activity Zones	Yes *Only works with Motion Detection.
	Output Notification	System Notification System Notification with Snapshot (Tapo Care Services)
Network	Network Connectivity	Connect via Wi-Fi
	Wireless Connectivity	IEEE 802.11b/g/n, 2.4 GHz Wi-Fi

Network	Transmission Rate	11b: 11 Mbps 11g: 54 Mbps 11n: 72.2 Mbps
	Protocol	TCP/IP, DHCP, ICMP, DNS, NTP, HTTPS, TCP, UDP
	Max. Distance Between Hub and Camera/Doorbell	/
	Ethernet Port	/
	RTSP	Yes
	ONVIF	Yes
Security	Security	On-Device Machine Learning 128-bit AES Encryption with SSL/TLS WPA/WPA2-PSK/WPA3
Power	Power Source	12V DC Power Adapter
	Input Voltage	100-240 V, 50/60 Hz
	Output Voltage	12 V, 1.0 A (DC Power)
	DC Power Connector Size	Inside Ø: 2.1 mm Outside Ø: 5.5 mm
	Power Cord Length	3 m
	Typical Power Consumption	5 W
	Maximum Power Consumption	8 W

General	Certifications	CE, FCC, NCC, BSMI, IC, VCCI, JRF, KC, RCM, WEEE, EAC, RoHS
	Smart Integration	Google Assistant, Amazon Alexa
	Weather Resistance	\
	System Requirements	Tapo App: iOS 9.0 or higher, Andriod 4.4 or higher
	Mounting Options	Tabletop Ceiling-Mounted
	Operating Temperature	0 °C ~ 40 °C (32 °F ~ 104 °F)
	Storage Temperature	-20 °C ~70 °C (-4 °F ~ 158 °F)
	Operating Humidity	10%~90% RH, Non-condensing
	Storage Humidity	5%~90% RH, Non-condensing
	Charging Temperature	\
	Mounting Screw Size	
	Dimensions	3.15 × 3.15 × 4.41 in (80 × 80 × 112 mm)
	Weight	11.01 oz / 312.12 g
	Package Contents	Tapo C225 Camera DC Power Adapter Quick Start Guide Mounting Screws Mounting Template Camera Base