

RG-NBR6000 Series Reyee High-performance Cloud Managed Security Router

DATASHEET



Highlights

- High performance, "All-in-One" cloud managed security router.
- All-in-one: Self-security + network behavior audit = NBR.
- Flexible linkage with Ruijie multi-software platform.
- L7 DPI and intelligent flow control in VPN tunnels.

Highlight Features

High Performance, "All-in-One" Security Router



2.5 Gbps
2000 Users

500 Mbps
200 Users

Up to 2.5Gbps Throughput

Up to 2000 Concurrent Users

10G SFP+Port Uplink

Up to 1000 IPSec Tunnels

Free Cloud Management

RG-NBR6215-E

RG-NBR6210-E

RG-NBR6205-E

RG-NBR6120-E

Multi-service, One is Enough

All-in-one: Self-security + Network Behavior Audit = NBR



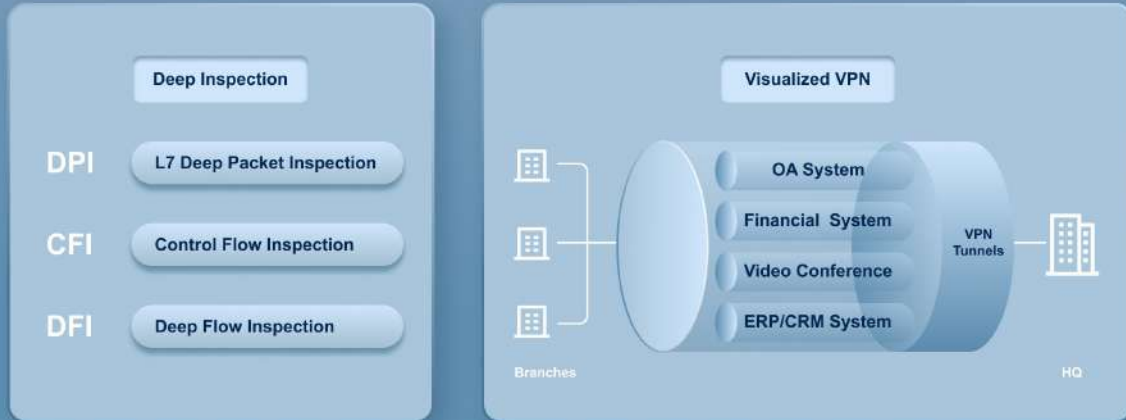
Flexible linkage with Ruijie Multi-software Platform



Highlight Features

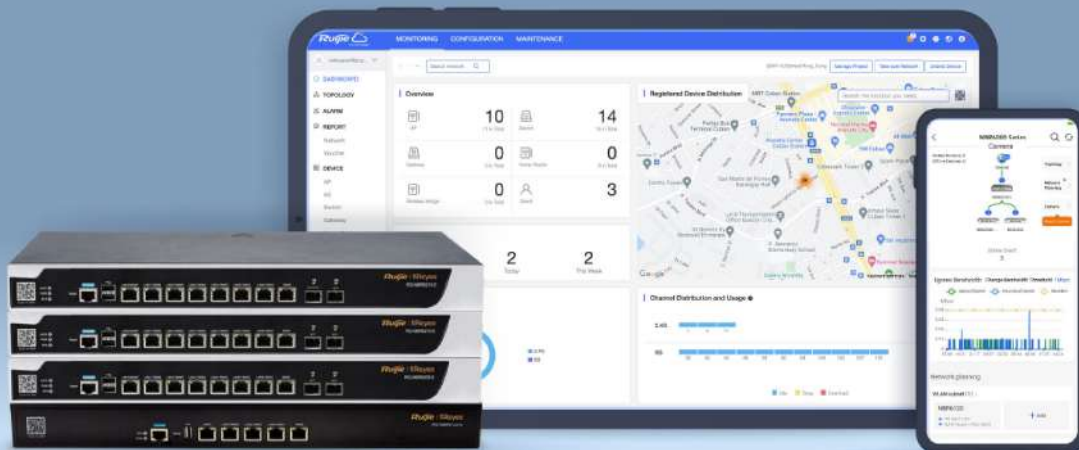
L7 DPI and Intelligent Flow Control in VPN Tunnels

Not only powerful behavior management(2500+ rules library) based on L7 DPI, but also visualized VPN, to guarantee key service in tunnel.



Cloud, Make Your Business Easy

- Self-organization network
- Scenario-based configuration guide
- Marketing portal authentication
- Quickly advanced service setup by APP
- Cloud APP maintenance remotely



Specifications

| Hardware Specifications | | | | |
|-------------------------|--|--|---|--|
| Specification | RG-NBR6120-E | RG-NBR6205-E | RG-NBR6210-E | RG-NBR6215-E |
| Basic Specifications | | | | |
| WAN Port | 1 x 10/100/1000 Base-T port | 1 x 10/100/1000 Base-T port | 1 x 10/100/1000 Base-T port | 1 x 10/100/1000 Base-T port |
| LAN Port | 1 x 10/100/1000 Base-T port | 1 x 10/100/1000 Base-T port | 1 x 10/100/1000 Base-T port | 1 x 10/100/1000 Base-T port |
| LAN/WAN Switchable Port | 3 x 10/100/1000 Base-T port | 6 x 10/100/1000 Base-T ports 2 x 1GBase-X SFP ports | 6 x 10/100/1000 Base-T ports 2 x 1GBase-X SFP ports | 6 x 10/100/1000 Base-T ports 1 x 1GBase-X SFP port 1 x 10GBase-X SFP+ port |
| Throughput | 600 Mbps | 1.5 Gbps | 1.7 Gbps | 2.5 Gbps |
| Client (Recommended) | 200 | 500 | 1000 | 1500 |
| System Specifications | | | | |
| CPU | 2 Cores, 880 MHz | 2 Cores, 1.2 GHz | 3 Cores, 1.2 GHz | 4 Cores, 1.2 GHz |
| SDRAM/RAM | 512 MB | 2 GB | 2 GB | 2 GB |
| Flash Memory | 4 GB EMMC | 8 GB EMMC + 8 MB SPIFLASH | 8 GB EMMC + 8 MB SPIFLASH | 8 GB EMMC + 8 MB SPIFLASH |
| Hard Disk Drive | Not Support | 1 TB (Not delivered with the router, can be added) | 1 TB (Not delivered with the router, can be added) | 1 TB (Not delivered with the router, can be added) |
| Physical Specifications | | | | |
| LED | 1 x System Status LED 1 x Power Status LED | 1 x System Status LED 1 x Power Status LED 1 x SATA LED | 1 x System Status LED 1 x Power Status LED 1 x SATA LED | 1 x System Status LED 1 x Power Status LED 1 x SATA LED |
| Button | 1 x Power button | 1 x Power button | 1 x Power button | 1 x Power button |
| Dimensions (W x D x H) | 440 mm x 43.6 mm x 200 mm (17.32 in. x 1.72 in. x 7.87 in., without rubber pads) | 440 mm x 43.6 mm x 200 mm (17.32 in. x 1.72 in. x 7.87 in., without rubber pads) | 440 mm x 43.6 mm x 200 mm (17.32 in. x 1.72 in. x 7.87in., without rubber pads) | 440 mm x 43.6 mm x 200 mm (17.32 in. x 1.72 in. x 7.87 in., without rubber pads) |
| Mounting Method | Rack-mounted | Rack-mounted | Rack-mounted | Rack-mounted |

Specifications

Hardware Specifications

| Specification | RG-NBR6120-E | RG-NBR6205-E | RG-NBR6210-E | RG-NBR6215-E |
|-----------------------|--------------------------------|--------------------------------|--------------------------------|--------------------------------|
| Rack Size | 1U 19-inch Rack-mounted | 1U 19-inch Rack-mounted | 1U 19-inch Rack-mounted | 1U 19-inch Rack-mounted |
| Fan | N/A | 2 | 2 | 2 |
| Environment | | | | |
| Operating Temperature | -5°C to 45°C (23°F to 113°F) | 0°C to 45°C (32°F to 113°F) | 0°C to 45°C (32°F to 113°F) | 0°C to 45°C (32°F to 113°F) |
| Operating Humidity | 10% to 90% RH (non-condensing) | 10% to 90% RH (non-condensing) | 10% to 90% RH (non-condensing) | 10% to 90% RH (non-condensing) |
| Performance | | | | |
| PPPoE Server Accounts | 200 | 500 | 1000 | 2000 |

Software Specifications

| Basic Features | | | | |
|---------------------------------|--|--|--|--|
| Internet Access Mode | PPPoE Client DHCP Client Static IP | PPPoE Client DHCP Client Static IP | PPPoE Client DHCP Client Static IP | PPPoE Client DHCP Client Static IP |
| Access Mode Auto-Identification | ✓ | ✓ | ✓ | ✓ |
| WAN Address Collision Avoidance | ✓ | ✓ | ✓ | ✓ |
| VLAN | ✓ | ✓ | ✓ | ✓ |
| IPv6 | ✓ | ✓ | ✓ | ✓ |
| SNMP | ✓ | ✓ | ✓ | ✓ |
| Network Management | | | | |
| Port Isolation | ✓ | ✓ | ✓ | ✓ |
| Port Mirroring | ✓ | ✓ | ✓ | ✓ |
| LAN Port Link Aggregation | Not Support | ✓ | ✓ | ✓ |
| Behavior Management | App Block (Time/IP-based Policy) Website Filtering Blacklist/Whitelist | | | |

Specifications

| Software Specifications | | | | |
|-------------------------------|---|--------------|--------------|--------------|
| Specification | RG-NBR6120-E | RG-NBR6205-E | RG-NBR6210-E | RG-NBR6215-E |
| Application Identification | ✓ | ✓ | ✓ | ✓ |
| Application Priority | ✓ | ✓ | ✓ | ✓ |
| Flow Control | User Flow Control Policies IP-based Automatic Bandwidth Assignment VPN Flow Control | | | |
| System Log | ✓ | ✓ | ✓ | ✓ |
| Log Storage | ✓ | ✓ | ✓ | ✓ |
| Fault Diagnosis | ✓ | ✓ | ✓ | ✓ |
| Authentication | Portal Authentication Password Authentication Voucher Authentication SMS Authentication | | | |
| VPN | | | | |
| L2TP VPN | ✓ | ✓ | ✓ | ✓ |
| PPTP VPN | ✓ | ✓ | ✓ | ✓ |
| IPsec VPN | ✓ | ✓ | ✓ | ✓ |
| L2TP/PPTP Tunnels | 16 | 400 | 600 | 1000 |
| L2TP/IPsec VPN Performance | 8 Mbps | 400 Mbps | 600 Mbps | 1000 Mbps |
| Routing | | | | |
| Static Routing | ✓ | ✓ | ✓ | ✓ |
| RIP/RIPng | ✓ | ✓ | ✓ | ✓ |
| OSPFv2 | ✓ | ✓ | ✓ | ✓ |
| OSPFv3 | Not Support | ✓ | ✓ | ✓ |
| Equal-Cost Multi-Path Routing | ✓ | ✓ | ✓ | ✓ |
| Policy-Based Routing | ✓ | ✓ | ✓ | ✓ |

Specifications

| Software Specifications | | | | |
|------------------------------------|---------------|---------------|---------------|---------------|
| Specification | RG-NBR6120-E | RG-NBR6205-E | RG-NBR6210-E | RG-NBR6215-E |
| Active/Standby Switchover of Ports | ✓ | ✓ | ✓ | ✓ |
| WAN Load Balancing | ✓ | ✓ | ✓ | ✓ |
| Network | | | | |
| PPPoE Client | ✓ | ✓ | ✓ | ✓ |
| PPPoE Server | Support (CLI) | Support (CLI) | Support (CLI) | Support (CLI) |
| DHCP Server | ✓ | ✓ | ✓ | ✓ |
| DHCP Snooping | ✓ | ✓ | ✓ | ✓ |
| DNS Client | ✓ | ✓ | ✓ | ✓ |
| DNS Server | ✓ | ✓ | ✓ | ✓ |
| DNS Proxy | ✓ | ✓ | ✓ | ✓ |
| FTP Client | ✓ | ✓ | ✓ | ✓ |
| FTP Server | ✓ | ✓ | ✓ | ✓ |
| TFTP Client | ✓ | ✓ | ✓ | ✓ |
| NTP Client | Not Support | ✓ | ✓ | ✓ |
| DDNS | Cloud DNS | Cloud DNS | Cloud DNS | Cloud DNS |
| NAT | ✓ | ✓ | ✓ | ✓ |
| SNMP | ✓ | ✓ | ✓ | ✓ |
| Ruijie Cloud | ✓ | ✓ | ✓ | ✓ |
| ACL | | | | |
| ACL | ✓ | ✓ | ✓ | ✓ |
| Time-based Extended ACL | ✓ | ✓ | ✓ | ✓ |

Specifications

| Software Specifications | | | | |
|--|--------------|--------------|--------------|--------------|
| Specification | RG-NBR6120-E | RG-NBR6205-E | RG-NBR6210-E | RG-NBR6215-E |
| Security | | | | |
| SYN Flood Attack Guard | Not Support | ✓ | ✓ | ✓ |
| UDP Flood Attack Guard | Not Support | ✓ | ✓ | ✓ |
| ICMP Flood Attack Guard | Not Support | ✓ | ✓ | ✓ |
| ICMP Redirection Attack Guard | Not Support | ✓ | ✓ | ✓ |
| ICMP Unreachable Packet Attack Guard | Not Support | ✓ | ✓ | ✓ |
| Fraggle Attack Guard | Not Support | ✓ | ✓ | ✓ |
| Overlength ICMP Packet Attack Prevention | Not Support | ✓ | ✓ | ✓ |
| Winnuke Attack Guard | Not Support | ✓ | ✓ | ✓ |
| IP-based Security Domain Division | Not Support | ✓ | ✓ | ✓ |
| Security Domain Division based on Physical Port (Sub Interface and Aggregation Port) and Dialup Port | Not Support | ✓ | ✓ | ✓ |
| Service and Support | | | | |
| Cloud Management | ✓ | ✓ | ✓ | ✓ |
| App Management | ✓ | ✓ | ✓ | ✓ |
| App Upgrade | ✓ | ✓ | ✓ | ✓ |
| App Restart | ✓ | ✓ | ✓ | ✓ |

Package Contents

| Package Contents | RG-NBR6120-E | RG-NBR6205-E | RG-NBR6210-E | RG-NBR6215-E |
|-------------------------------|--------------------------|--------------------------|--------------------------|--------------------------|
| Router | 1 | 1 | 1 | 1 |
| Power Cord | 1 | 1 | 1 | 1 |
| Power Cord Retention Clip | 1 | 1 | 1 | 1 |
| Rubber Pads | 4 | 4 | 4 | 4 |
| Mounting Brackets | 2 | 2 | 2 | 2 |
| M4 x 8 mm Screws | 6 | 6 | 6 | 6 |
| DB-9 Console Cable | 1 | 1 | 1 | 1 |
| Ethernet Cable | 1 | 1 | 1 | 1 |
| User Manual | 1 | 1 | 1 | 1 |
| Warranty Card | 1 | 1 | 1 | 1 |
| Package Weight | 14.66 kg | 17.08 kg | 17.08 kg | 17.08 kg |
| Package Dimension (w x d x h) | 560 mm x 470 mm x 380 mm | 560 mm x 470 mm x 380 mm | 560 mm x 470 mm x 380 mm | 560 mm x 470 mm x 380 mm |



 **R**edefine your **e**asy network

Copyright ©2000-2023 Ruijie Networks Co., Ltd. All rights reserved.

No part of this document may be reproduced or transmitted in any form or any means without prior written consent of Ruijie Networks Co., Ltd.

Notice

This content is applicable only to regions outside the China mainland. Ruijie Networks Co., Ltd. reserves the right to interpret this content.

The information contained herein is subject to change without notice. Nothing herein should be construed as constituting an additional warranty. Ruijie Networks Co., Ltd. shall not be liable for technical or editorial errors or omissions contained herein.



Ruijie Networks Co., Ltd.
Building 19, Juyuanzhou Industrial Park, No.618 Jinshan
Road, Cangshan District, Fuzhou, Fujian, China
Website: <https://www.ruijienetworks.com>