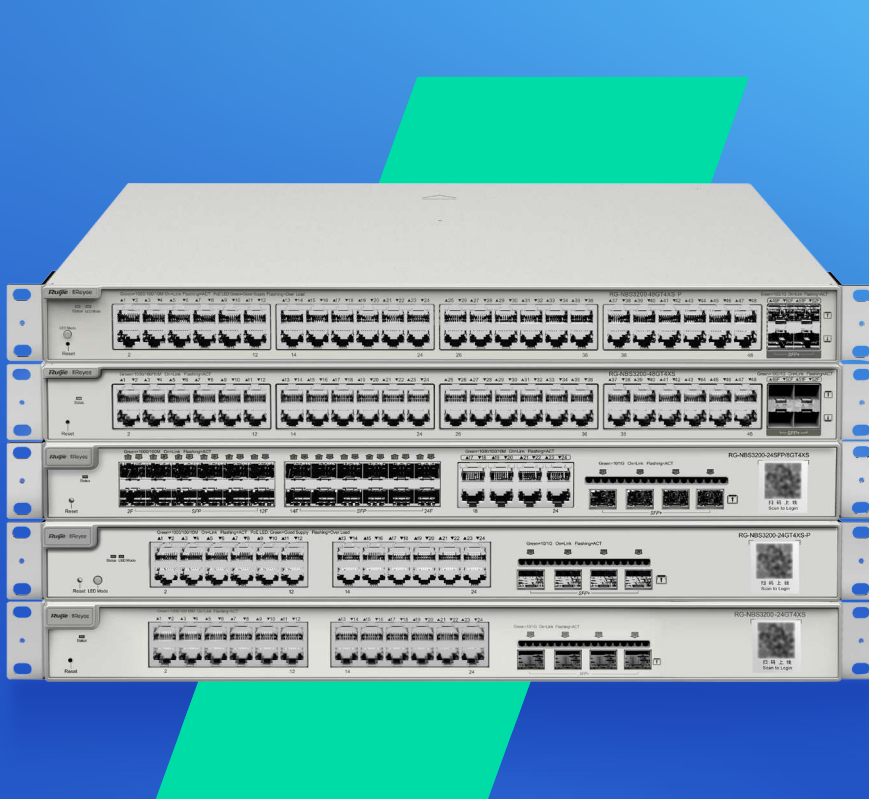


# RG-NBS31/32 Series Layer 2 Cloud Managed Switches

DATASHEET

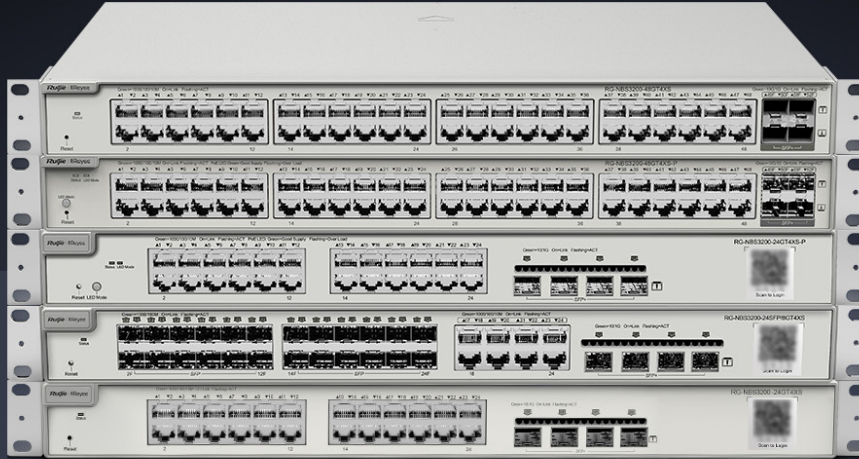


## Highlights


- Enterprise-class Quality Ensures High Performance
- Multiple Security Policies Protect Your Network
- Lifetime management on Ruijie Cloud at anytime anywhere

# Highlight Features

## RG-NBS3000 Series Layer 2 Switch



 PoE Budget  
370W

 Max. 30W  
on Each Port

 Surge Protection  
6KV

 5 Years  
Warranty

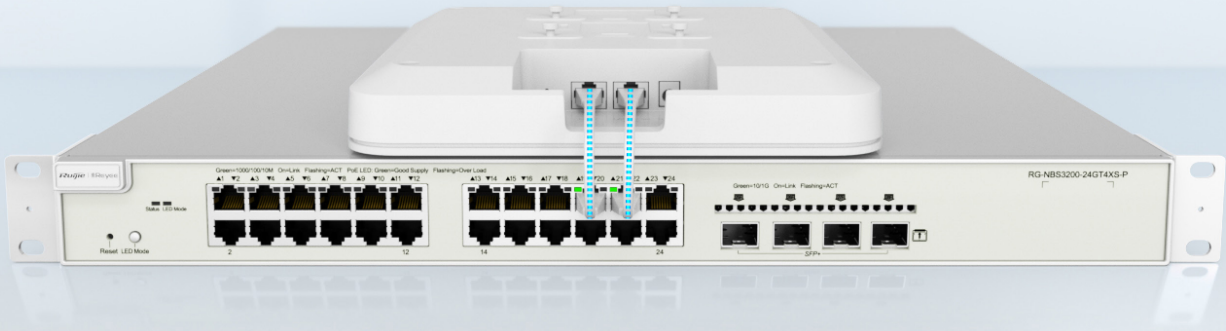
## Abundant PoE Application Scenarios



# Highlight Features

## Enterprise-class Quality Ensures High Performance

Link Aggregation IGMP Snooping VLAN



## Enterprise-class Quality Ensures High Performance

Link Aggregation IGMP Snooping VLAN



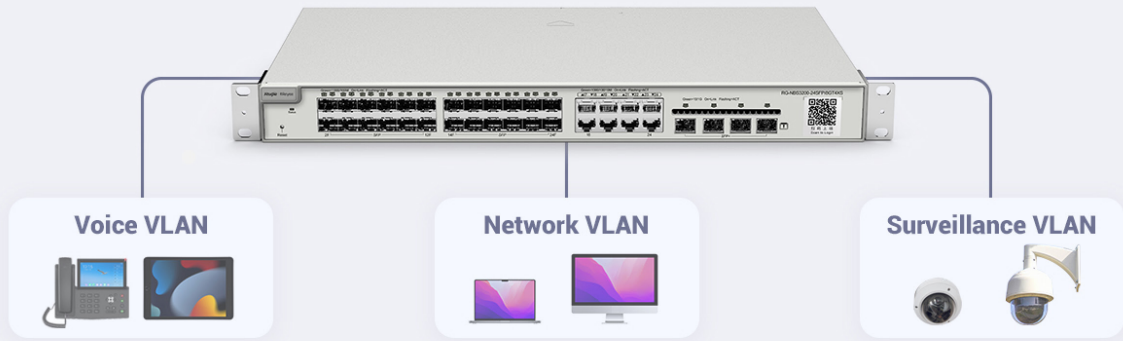
# Highlight Features

## Enterprise-class Quality Ensures High Performance

Link Aggregation

IGMP Snooping

**VLAN**



## Multiple Security Policies Protect Your Network

**Security**

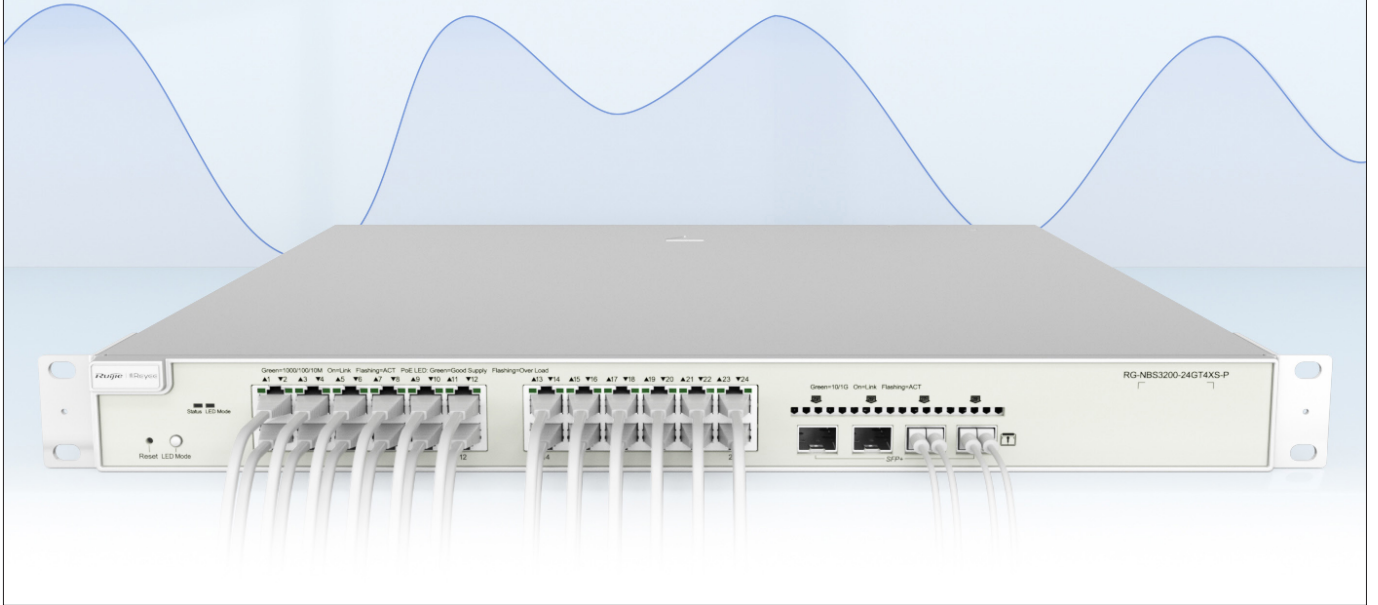
Stability



# Highlight Features

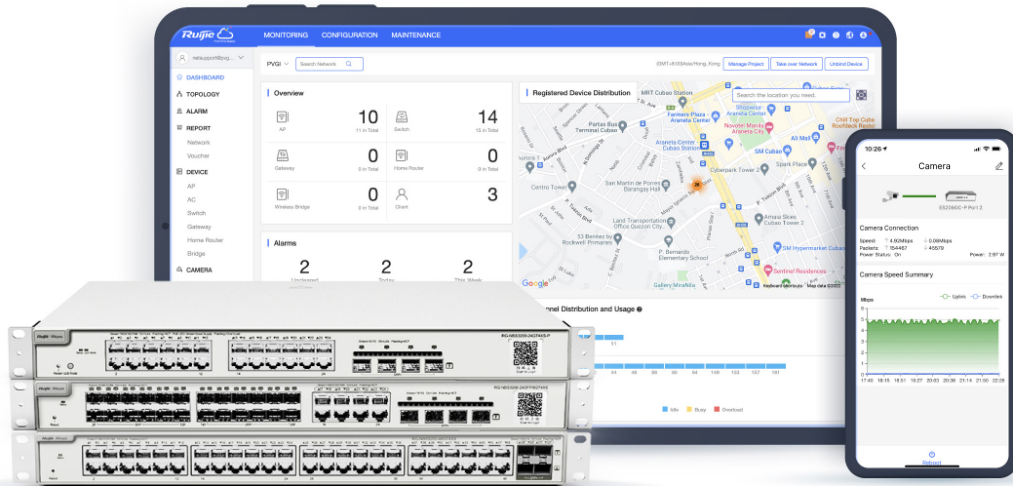
## Multiple Security Policies Protect Your Network

Security **Stability**



## Cloud, Make Your Business Easy

- SON, zero touch provisioning to Cloud
- Monitor switch statistics at anytime anywhere
- Configure VLANs on Ruijie Cloud APP
- Easy maintenance, save onsite time and cost



# Specifications

## Basic

Model	RG-NBS3100-8GT2SFP	RG-NBS3100-8GT2SFP-P	RG-NBS3100-24GT4SFP	RG-NBS3100-24GT4SFP-P	RG-NBS3100-48GT4SFP-P
10/100/1000Base-T ports	8	8	24	24	48
SFP ports	2	2	4	4	4
SFP+ ports	-	-	-	-	-
PoE/PoE+ ports	-	8	-	24	48
Max. PoE budget	-	125W	-	370W	370W
Layer Type	Layer 2	Layer 2	Layer 2	Layer 2	Layer 2
Switching capacity	20 Gbps	20 Gbps	56 Gbps	56 Gbps	104 Gbps
Forwarding rate	14.88 Mpps	14.88 Mpps	41.67 Mpps	41.67 Mpps	77.37 Mpps
Packet Buffer	4.1 Mbit	4.1 Mbit	4.1 Mbit	4.1 Mbit	16Mbit
MAC address table	8,000	8,000	8,000	8,000	16,000
Maximum VLAN Support	4094	4094	4094	4094	4094
Dimensions (W x D x H)	260 mm x 120 mm x 43.6 mm	330 mm x 220 mm x 43.6 mm	440 mm x 165 mm x 44 mm	440 mm x 293 mm x 44 mm	440 mm x 357.6 mm x 43.6 mm
Weight (With package)	1.2 kg	2 kg	2.4 kg	4.5 kg	5.4 kg
MTBF	> 200,000	> 200,000	> 200,000	> 200,000	> 200,000
Warranty	5 Years	5 Years	5 Years	5 Years	5 Years

## Layer 2 Features

Jumbo Frame	9216	9216	9216	9216	9216
Flow Control	✓	✓	✓	✓	✓
STP (IEEE 802.1d)	✓	✓	✓	✓	✓
RSTP (IEEE 802.1w)	✓	✓	✓	✓	✓
MSTP (IEEE 802.1s)	-	-	-	-	-
Port Fast	✓	✓	✓	✓	✓
BPDU Guard	✓	✓	✓	✓	✓

# Specifications

## Layer 2 Features

Model	RG-NBS3100-8GT2SFP	RG-NBS3100-8GT2SFP-P	RG-NBS3100-24GT4SFP	RG-NBS3100-24GT4SFP-P	RG-NBS3100-48GT4SFP-P
Errdisable Recovery	✓	✓	✓	✓	✓
Max. Aggregation Group	8	8	8	8	8
Max. Member per Group	8	8	8	8	8
Unknow Unicast Storm Suppression	✓	✓	✓	✓	✓
Multicast / Broadcast Storm Suppression	✓	✓	✓	✓	✓
Many-to-One Mirroring	✓	✓	✓	✓	✓
VLAN Range	1-4094	1-4094	1-4094	1-4094	1-4094
Port-based VLAN	✓	✓	✓	✓	✓
MAC-based VLAN	✓	✓	✓	✓	✓
IP-based VLAN	✓	✓	✓	✓	✓
Voice VLAN	✓	✓	✓	✓	✓
RLDP	✓	✓	✓	✓	✓
LLDP / LLDP-MED	✓	✓	✓	✓	✓
Cable Testing	✓	✓	✓	✓	✓
IGMP Snooping v1/v2/v3	✓	✓	✓	✓	✓

## Software Features

Ping	✓	✓	✓	✓	✓
Traceroute	✓	✓	✓	✓	✓
ACL Entries	1200	1200	1200	1200	1200
IP Standard ACL	✓	✓	✓	✓	✓
MAC-based Extended ACL	✓	✓	✓	✓	✓

# Specifications

## Software Features

Model	RG-NBS3100-8GT2SFP	RG-NBS3100-8GT2SFP-P	RG-NBS3100-24GT4SFP	RG-NBS3100-24GT4SFP-P	RG-NBS3100-48GT4SFP-P
IP-based Extended ACL	✓	✓	✓	✓	✓
Port-based Rate Limit (Ingress/Egress)	✓	✓	✓	✓	✓
SNMP v1/v2c/v3	-	-	-	-	-
Web Management	✓	✓	✓	✓	✓
Management IP	10.44.77.200	10.44.77.200	10.44.77.200	10.44.77.200	10.44.77.200
HTTP/HTTPS	✓	✓	✓	✓	✓
Cloud Management	✓	✓	✓	✓	✓
SON (Self-Organizing Network) with IP	✓	✓	✓	✓	✓
Camera Recognition	✓	✓	✓	✓	✓
Loop Prevention	✓	✓	✓	✓	✓
Loop Notification	✓	✓	✓	✓	✓
PoE Usage Alarm	-	✓	-	✓	✓
Protection Port	✓	✓	✓	✓	✓
IP Source Guard	✓	✓	✓	✓	✓
Anti-ARP Spoofing	✓	✓	✓	✓	✓
DHCP Snooping	✓	✓	✓	✓	✓
DHCP Client	✓	✓	✓	✓	✓

## Physical Features

Reset Button	Front	Front	Front	Front	Front
Cable Hot-swappable	✓	✓	✓	✓	✓
Power Supply Slot	Power adapter	Single, fixed power supply	Single, fixed power supply	Single, fixed power supply	Single, fixed power supply
Power Supplies	100 - 240V AC, 1A	100 - 240V AC, 2A	100 - 240V AC, 0.6A	100 - 240V AC, 6A	100 - 240V AC, 7A



# Specifications

## Physical Features

Model	RG-NBS3100-8GT2SFP	RG-NBS3100-8GT2SFP-P	RG-NBS3100-24GT4SFP	RG-NBS3100-24GT4SFP-P	RG-NBS3100-48GT4SFP-P
Power Consumption	≤ 8W	≤ 145W	≤ 21W	≤ 443W	≤ 447.69W
EEE	✓	✓	✓	✓	✓
Fan	-	-	-	1	2
Airflow	-	-	-	Left-to-Right	Left-to-Right
Fan Adaptive Speed Adjustment	-	-	-	✓	✓
Acoustic Noise	Noiseless	Noiseless	Noiseless	< 45dB	< 45dB
Operating Temperature	0°C to 50°C (32°F to 122°F)	0°C to 50°C (32°F to 122°F)	0°C to 50°C (32°F to 122°F)	0°C to 50°C (32°F to 122°F)	0°C to 50°C (32°F to 122°F)
Storage Temperature	-40°C to 70°C (-40°F to 158°F)	-40°C to 70°C (-40°F to 158°F)	-40°C to 70°C (-40°F to 158°F)	-40°C to 70°C (-40°F to 158°F)	-40°C to 70°C (-40°F to 158°F)
Operating Humidity	10% to 90% RH	10% to 90% RH	10% to 90% RH	10% to 90% RH	10% to 90% RH
Storage Humidity	5% to 95% RH	5% to 95% RH	5% to 95% RH	5% to 95% RH	5% to 95% RH
Port Surge	6 kV	6 kV	6 kV	6 kV	6 kV
Operating Altitude (meters)	-500 to 5000	-500 to 5000	-500 to 5000	-500 to 5000	-500 to 5000
Certificate	CE, RoHS	CE, RoHS	CE, RoHS	CE, RoHS	CE, RoHS

# Specifications

## Basic

Model	RG-NBS3200-24GT4XS	RG-NBS3200-24GT4XS-P	RG-NBS3200-24SFP/8GT4XS	RG-NBS3200-48GT4XS	RG-NBS3200-48GT4XS-P
10/100/1000Base-T ports	24	24	8 (Combo)	48	48
SFP ports	-	-	24	-	-
SFP+ ports	4	4	4	4	4
PoE/PoE+ ports	-	24	-	-	48
Max. PoE budget	-	370W	-	-	370W
Layer Type	Layer 2	Layer 2	Layer 2	Layer 2	Layer 2
Switching capacity	128 Gbps	128 Gbps	128 Gbps	176 Gbps	176 Gbps
Forwarding rate	95.24 Mpps	95.24 Mpps	95.24 Mpps	130.95 Mpps	130.95 Mpps
Packet Buffer	12 Mbit	12 Mbit	12 Mbit	16 Mbit	16 Mbit
MAC address table	16,000	16,000	16,000	16,000	16,000
Maximum VLAN Support	4094	4094	4094	4094	4094
Dimensions (W x D x H)	440 mmx 207.5 mm x 43.6 mm	440 mmx 357.6 mm x 43.6 mm	440 mm x 267.5 mm x 43.6 mm	440 mmx 267.5 mm x 43.6 mm	440 mmx 357.6 mm x 43.6 mm
Weight (With package)	2.9 kg	4.75 kg	3.35 kg	3.6 kg	5.4 kg
MTBF	> 200,000	> 200,000	> 200,000	> 200,000	> 200,000
Warranty	5 Years	5 Years	5 Years	5 Years	5 Years

## Layer 2 Features

Jumbo Frame	9216	9216	9216	9216	9216
Flow Control	✓	✓	✓	✓	✓
STP (IEEE 802.1d)	✓	✓	✓	✓	✓
RSTP (IEEE 802.1w)	✓	✓	✓	✓	✓
MSTP (IEEE 802.1s)	-	-	-	-	-
Port Fast	✓	✓	✓	✓	✓

# Specifications

## Layer 2 Features

Model	RG-NBS3200-24GT4XS	RG-NBS3200-24GT4XS-P	RG-NBS3200-24SFP/8GT4XS	RG-NBS3200-48GT4XS	RG-NBS3200-48GT4XS-P
BPDU Guard	✓	✓	✓	✓	✓
Errdisable Recovery	✓	✓	✓	✓	✓
Max. Aggregation Group	16	16	16	16	16
Max. Member per Group	8	8	8	8	8
Unknown Unicast Storm Suppression	✓	✓	✓	✓	✓
Multicast / Broadcast Storm Suppression	✓	✓	✓	✓	✓
Many-to-One Mirroring	✓	✓	✓	✓	✓
VLAN Range	1-4094	1-4094	1-4094	1-4094	1-4094
Port-based VLAN	✓	✓	✓	✓	✓
MAC-based VLAN	✓	✓	✓	✓	✓
IP-based VLAN	✓	✓	✓	✓	✓
Voice VLAN	✓	✓	✓	✓	✓
RLDP	✓	✓	✓	✓	✓
LLDP / LLDP-MED	✓	✓	✓	✓	✓
Cable Testing	✓	✓	✓	✓	✓
IGMP Snooping v1/v2/v3	✓	✓	✓	✓	✓

## Software Features

Ping	✓	✓	✓	✓	✓
Traceroute	✓	✓	✓	✓	✓
ACL Entries	1900	1900	1900	1900	1900

# Specifications

## Software Features

Model	RG-NBS3200-24GT4XS	RG-NBS3200-24GT4XS-P	RG-NBS3200-24SFP/8GT4XS	RG-NBS3200-48GT4XS	RG-NBS3200-48GT4XS-P
IP Standard ACL	✓	✓	✓	✓	✓
MAC-based Extended ACL	✓	✓	✓	✓	✓
IP-based Extended ACL	✓	✓	✓	✓	✓
Port-based Rate Limit (Ingress/Egress)	✓	✓	✓	✓	✓
SNMP v1/v2c/v3	-	-	-	-	-
Web Management	✓	✓	✓	✓	✓
Management IP	10.44.77.200	10.44.77.200	10.44.77.200	10.44.77.200	10.44.77.200
HTTP/HTTPS	✓	✓	✓	✓	✓
Cloud Management	✓	✓	✓	✓	✓
SON (Self-Organizing Network) with IP	✓	✓	✓	✓	✓
Camera Recognition	✓	✓	✓	✓	✓
Loop Prevention	✓	✓	✓	✓	✓
Loop Notification	✓	✓	✓	✓	✓
PoE Usage Alarm	-	✓	-	-	✓
Protection Port	✓	✓	✓	✓	✓
IP Source Guard	✓	✓	✓	✓	✓
Anti-ARP Spoofing	✓	✓	✓	✓	✓
DHCP Snooping	✓	✓	✓	✓	✓
DHCP Client	✓	✓	✓	✓	✓

## Physical Features

Reset Button	Front	Front	Front	Front	Front
--------------	-------	-------	-------	-------	-------

# Specifications

## Physical Features

Model	RG-NBS3200-24GT4XS	RG-NBS3200-24GT4XS-P	RG-NBS3200-24SFP/8GT4XS	RG-NBS3200-48GT4XS	RG-NBS3200-48GT4XS-P
Cable Hot-swappable	✓	✓	✓	✓	✓
Power Supply Slot	Single, fixed power supply	Single, fixed power supply	Single, fixed power supply	Single, fixed power supply	Single, fixed power supply
Power Supplies	100 - 240V AC, 1.5A	100 - 240V AC, 6A	100 - 240V AC, 2A	100 - 240V AC, 2A	100 - 240V AC, 7A
Power Consumption	≤ 28W	≤ 432W	≤ 42W	≤ 46W	≤ 448W
EEE	✓	✓	✓	✓	✓
Fan	1	1	1	1	1
Airflow	Left-to-Rear	Left-to-Right	Left-to-Rear	Left/Right-to-Rear	Left/Right-to-Rear
Fan Adaptive Speed Adjustment	✓	✓	✓	✓	✓
Acoustic Noise	< 45dB	< 45dB	< 45dB	< 45dB	< 45dB
Operating Temperature	0°C to 50°C (32°F to 122°F)	0°C to 50°C (32°F to 122°F)	0°C to 50°C (32°F to 122°F)	0°C to 50°C (32°F to 122°F)	0°C to 50°C (32°F to 122°F)
Storage Temperature	-40°C to 70°C (-40°F to 158°F)	-40°C to 70°C (-40°F to 158°F)	-40°C to 70°C (-40°F to 158°F)	-40°C to 70°C (-40°F to 158°F)	-40°C to 70°C (-40°F to 158°F)
Operating Humidity	10% to 90% RH	10% to 90% RH	10% to 90% RH	10% to 90% RH	10% to 90% RH
Storage Humidity	5% to 95% RH	5% to 95% RH	5% to 95% RH	5% to 95% RH	5% to 95% RH
Port Surge	6 kV	6 kV	6 kV	6 kV	6 kV
Operating Altitude (meters)	-500 to 5000	-500 to 5000	-500 to 5000	-500 to 5000	-500 to 5000
Certificate	CE, RoHS	CE, RoHS	CE, RoHS	CE, RoHS	CE, RoHS

# Package Contents

Device	RG-NBS3100-8GT2SFP	RG-NBS3100-8GT2SFP-P	RG-NBS3100-24GT4SFP	RG-NBS3100-24GT4SFP-P	RG-NBS3100-48GT4SFP-P
Mounting Bracket	2	2	2	2	2
Foot pad	4	4	4	4	4
Power supply	Power adapter	Power cord	Power cord	Power cord	Power cord
Quick Start Guide	1	1	1	1	1
Warranty Card	1	1	1	1	1
Accessories	Screws * 6	Screws * 6	Screws * 6	Screws * 6	Screws * 8
Package Weight	1.2 kg	2 kg	2.4 kg	4.5 kg	5.4 kg
Package Dimension (w x d x h)	361 mm x 259 mm x 94 mm	401 mm x 359 mm x 94 mm	533 mm x 258 mm x 102 mm	573 mm x 401 mm x 145 mm	573 mm x 468 mm x 165 mm

Device	RG-NBS3200-24GT4XS	RG-NBS3200-24GT4XS-P	RG-NBS3200-24SFP/8GT4XS	RG-NBS3200-48GT4XS	RG-NBS3200-48GT4XS-P
Mounting Bracket	2	2	2	2	2
Foot pad	4	4	4	4	4
Power supply	Power cord	Power cord	Power cord	Power cord	Power cord
Quick Start Guide	1	1	1	1	1
Warranty Card	1	1	1	1	1
Accessories	Screws * 8	Screws * 8	Screws * 8	Screws * 8	Screws * 8
Package Weight	2.9 kg	4.75 kg	3.35 kg	3.6 kg	5.4 kg
Package Dimension (w x d x h)	513 mm x 333 mm x 145 mm	573 mm x 468 mm x 165 mm	573 mm x 401 mm x 145 mm	573 mm x 401 mm x 145 mm	573 mm x 468 mm x 165 mm

**Ruijie | Rcycc**

 **Redefine your easy network**

---

**Copyright ©2000-2022 Ruijie Networks Co., Ltd. All rights reserved.**

No part of this document may be reproduced or transmitted in any form or any means without prior written consent of Ruijie Networks Co., Ltd.

**Notice**

This content is applicable only to regions outside the China mainland. Ruijie Networks Co., Ltd. reserves the right to interpret this content.

The information contained herein is subject to change without notice. Nothing herein should be construed as constituting an additional warranty. Ruijie Networks Co., Ltd. shall not be liable for technical or editorial errors or omissions contained herein.



Ruijie Networks Co., Ltd.  
Building 19, Juyuanzhou Industrial Park, No.618  
Jinshan Road, Cangshan District, Fuzhou, Fujian, China  
Website: <https://www.ruijienetworks.com>